

**COUNTY OF LOS ANGELES
ROAD DEPARTMENT**

**PRECISE
BENCH MARK LIST**



**LA MIRADA QUAD
NORWALK QUAD
SANTA FE QUAD**

1980 ADJUSTMENT

P R E F A C E
1980 Adjustment

The Road Department level net published in 1975 consisted of more than 1500 miles of levels supporting in excess of 18,000 bench marks. For reasons of economy, this 1980 adjustment is reduced to about 55% of the bench marks previously published. Reductions were made by increasing the spacing between level lines in unincorporated territory, and eliminating lines in non-contract cities and areas where the probability of future engineering projects appears slight. The 1980 adjustment is an update of the remainder of the 1975 bench marks, not including baselines. Data from previous adjustments is available without inferring any responsibility for the current reliability of the data or the actual existence of the bench marks. Elevations of bench marks with the same quad name, but different adjustment dates, are not normally compatible.

To facilitate the adjustment, indexing, and distribution of adjusted values of the net, the County territory is divided into 34 quads or areas. For identification purposes each quad is given a name, viz., "Rosemead," "La Mirada," "Santa Fe," etc. When bench marks and elevations in the Road Department net are used, the name of the quad in which the bench mark is located and the date of the elevation adjustment must be included in the bench mark description, e.g.,

CY 6901 - RDEM TAG S CB 11FT E BCR @ SE COR LA CIENEGA
BLVD & LENNOX BLVD 32FT S & 73FT E C/L INT
(HAWTHORNE - 1980) ELEV. 82.549

The precision of the net is reflected by an indicated field probable error of plus or minus 0.012 foot per mile of leveling as determined from over 300 conditions of closure. However, many years experience in vertical control in the greater Los Angeles basin and Antelope Valley indicate that because of varying degrees of subsidence and heaving, the true datum is recovered only by obtaining substantial agreement between a number of bench marks.

The users of this net are invited to assist in its maintenance by notifying this Department of cases of obliteration, apparent mistakes in descriptions or elevations, and proven disturbance of bench marks.

DATUM: U. S. Coast and Geodetic Survey Sea Level Datum
of 1929, through the medium of the Los Angeles
County Engineer Precise Level Net.

ABBREVIATIONS USED IN BENCH MARK LISTINGS

ABUT - - - - -	Abutment	EC - - - - -	End of Curve
ALG - - - - -	Along	ENT - - - - -	Entrance
ANG PT - - - - -	Angle Point	FL - - - - -	Floor
B/W - - - - -	Back of Walk	FTG - - - - -	Footing
BCR - - - - -	Beginning of Curb Return	FRWY - - - - -	Freeway
BC - - - - -	Beginning of Curve	F/W - - - - -	Front of Walk
BLDG - - - - -	Building	GAR - - - - -	Garage
EM - - - - -	Bench Mark	HDWL - - - - -	Headwall
BT SPK - - - - -	Boat or Bolt Spike	HSE - - - - -	House
BR CAP - - - - -	Brass or Bronze Cap	HWY - - - - -	Highway
C B - - - - -	Catch Basin	INT - - - - -	Intersection
CTR - - - - -	Center	IP - - - - -	Iron Pipe
C/L - - - - -	Center Line	LT - - - - -	Left
C/L INT - - - - -	Center Line Intersection	LACE - - - - -	L. A. City Engineer
C/L PROD - - - - -	Center Line Produced	LACS - - - - -	L. A. Co. Engineer
CONC - - - - -	Concrete	LAFC - - - - -	L. A. Co. Flood Control
COR - - - - -	Corner	L&BN - - - - -	Lead and Bench Nail
COE - - - - -	Corps of Engineers	L&BR - - - - -	Lead and Brad
CULV - - - - -	Culvert	L&N - - - - -	Lead and Nail
CYN - - - - -	Canyon	L&SPK - - - - -	Lead and Spike
CB - - - - -	Curb	L&T - - - - -	Lead and Tack
CS MON - - - - -	Co. Engineer Monument	MCR - - - - -	Middle of Curb Return
CT SPK - - - - -	Cut Spike	MKD - - - - -	Marked
DR - - - - -	Drive or Driveway	MC - - - - -	Middle of Curve
E/O - - - - -	East of	MON - - - - -	Monument
ECR - - - - -	End of Curb Return	N/O - - - - -	North of

ABBREVIATIONS USED IN BENCH MARK LISTINGS . . . CONTINUED

NR - - - - - Near
OPP - - - - - Opposite
PI - - - - - Point of Intersection
PK&W - - - - - FK Nail and Washer
P/L - - - - - Property Line
POST - - - - - Point on Semi-Tangent
PP - - - - - Power Pole
PVMT - - - - - Pavement
PROD - - - - - Produced
RD - - - - - Road
RDEM - - - - - Road Dept. Bench Mark
RDEM TAG - - - - Road Dept. Bench Mark Tag
RR - - - - - Railroad
RT - - - - - Right
R/W - - - - - Right of Way
SDMH - - - - - Storm Drain Manhole
SMH - - - - - Sewer Manhole
SPK - - - - - Spike
ST&W - - - - - Spike Tin and Washer
S/O - - - - - South of
TP - - - - - Telephone Pole
USC&GS - - - - - U. S. Coast and Geodetic Survey
USGS - - - - - U. S. Geological Survey
WK - - - - - Walk
W/O - - - - - West of

QUAD

SANTA FE

NORWALK QUAD

ARTESIA QUAD

COUNTY

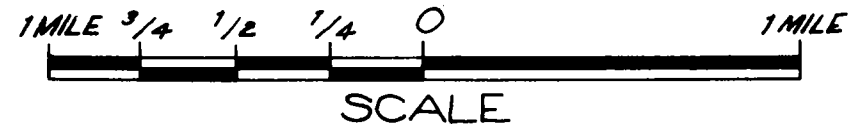
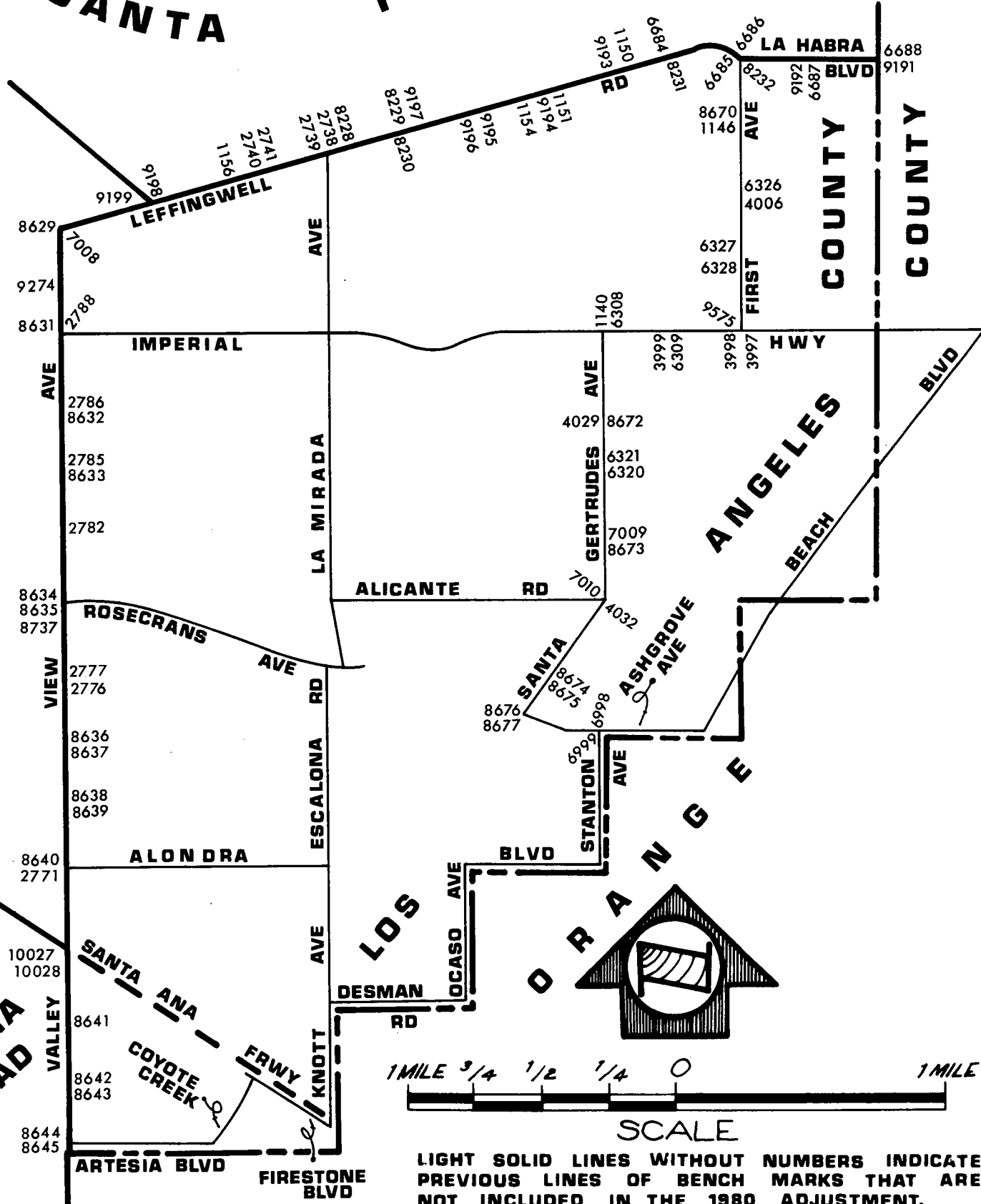
COUNTY

ANGELES BEACH

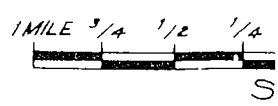
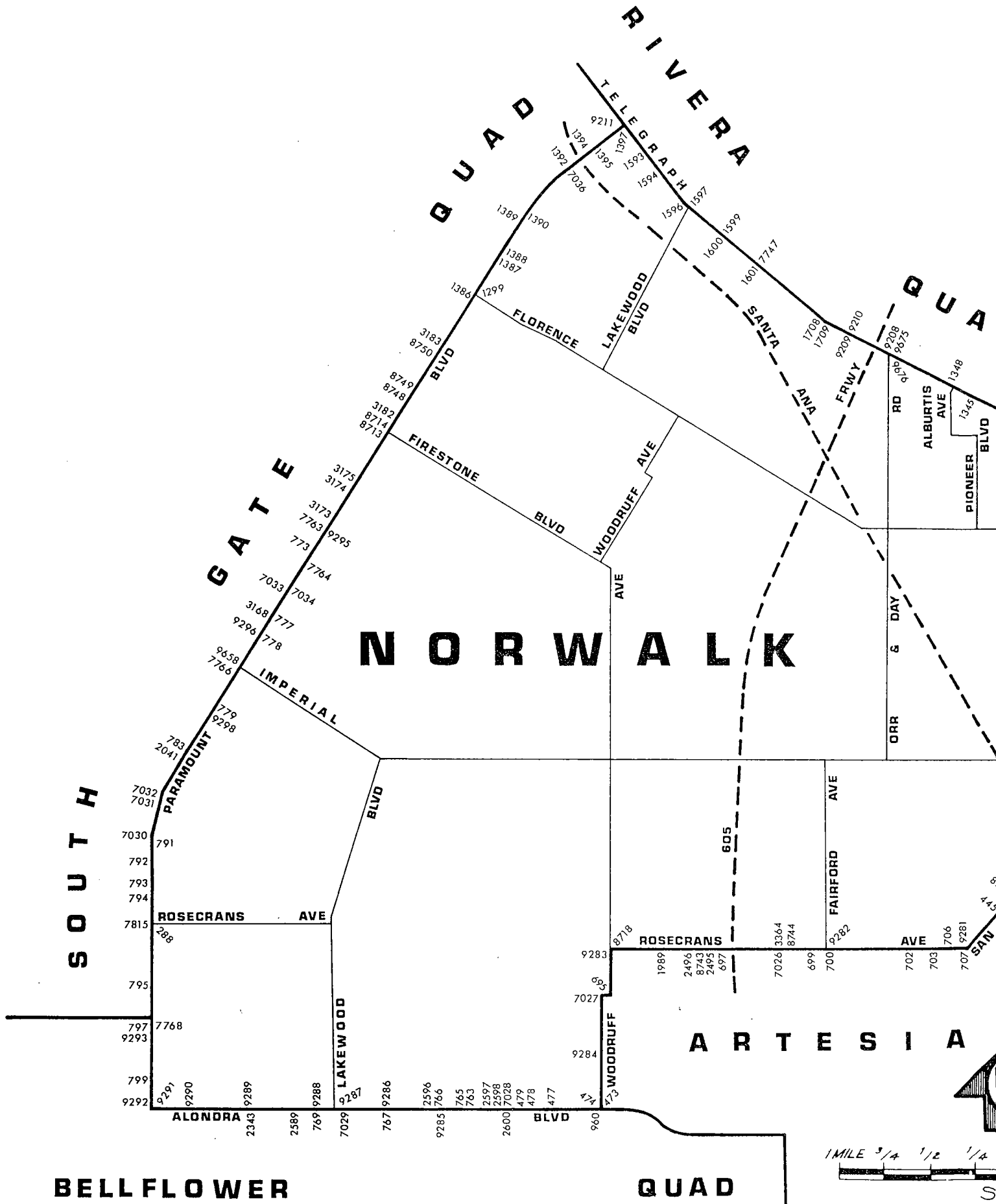
LOS ANGELES

ORANGE

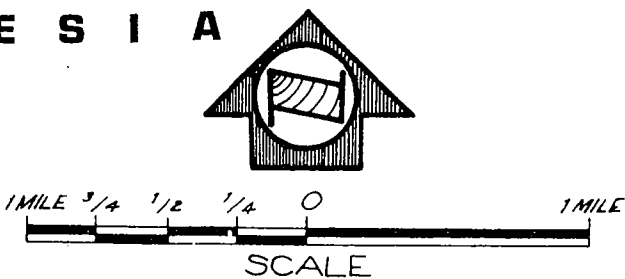
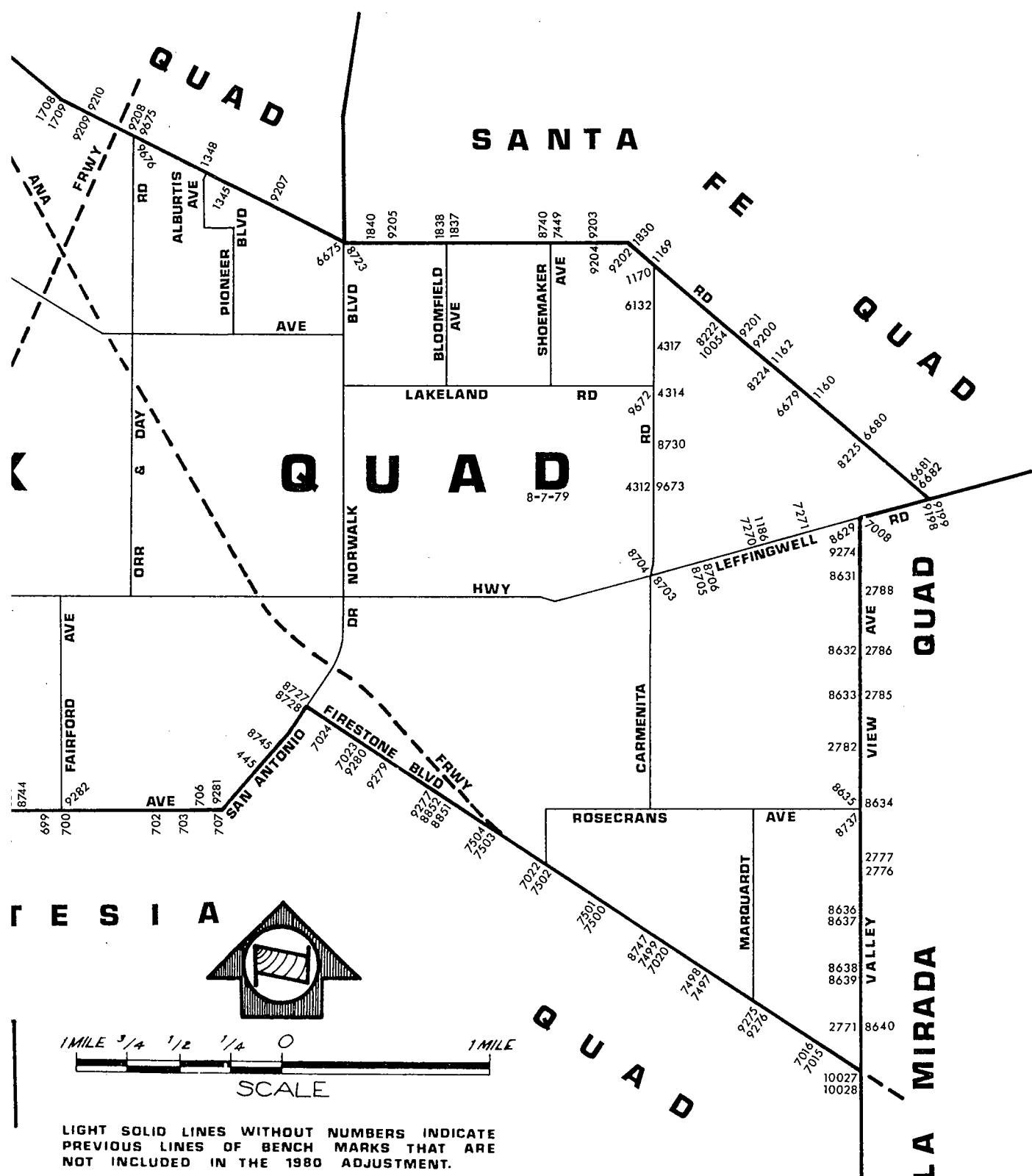
LA MIRADA QUAD



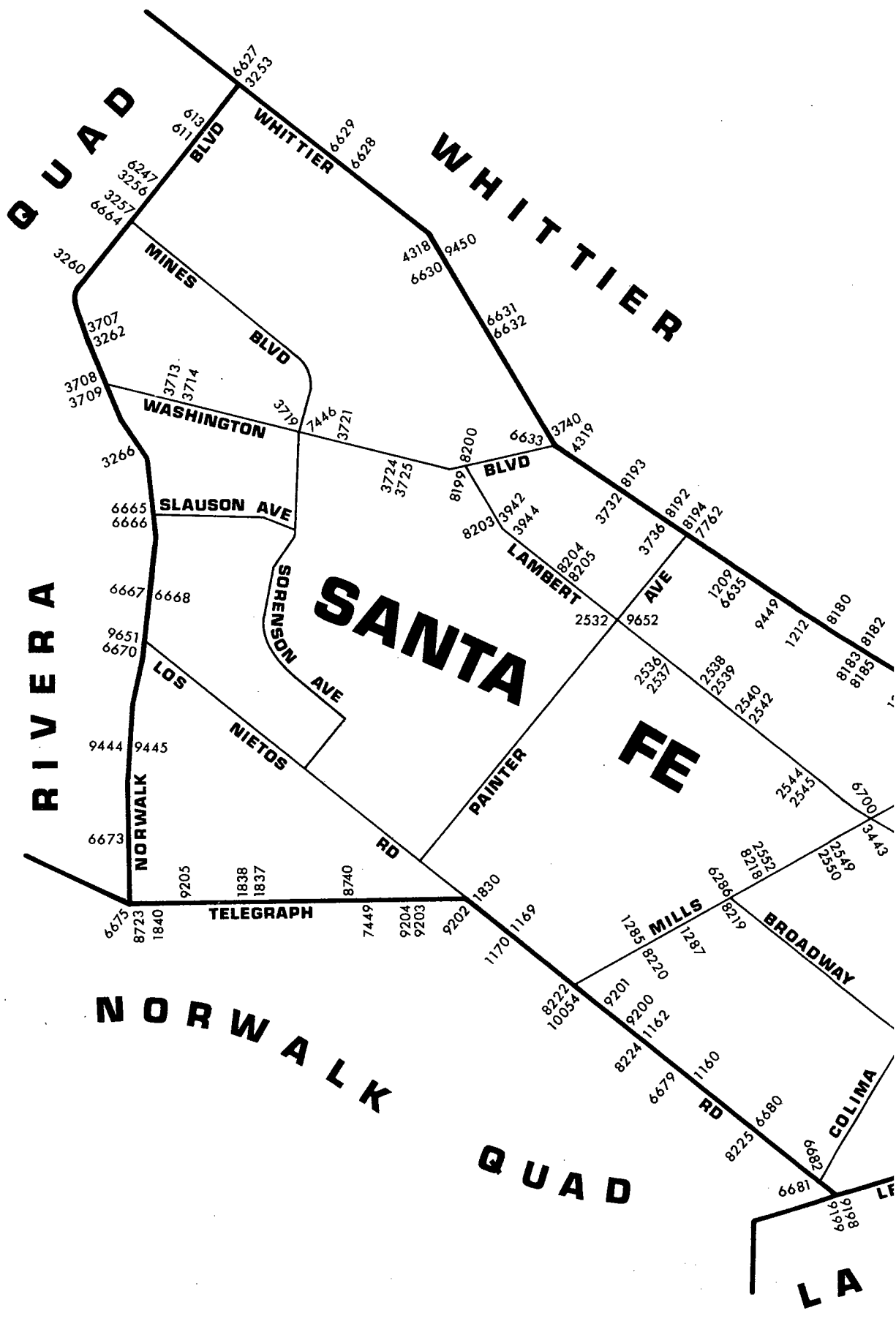
LIGHT SOLID LINES WITHOUT NUMBERS INDICATE PREVIOUS LINES OF BENCH MARKS THAT ARE NOT INCLUDED IN THE 1980 ADJUSTMENT.



LIGHT SOLID LINES W
PREVIOUS LINES OF
NOT INCLUDED IN TH



LIGHT SOLID LINES WITHOUT NUMBERS INDICATE PREVIOUS LINES OF BENCH MARKS THAT ARE NOT INCLUDED IN THE 1980 ADJUSTMENT.



GUADALUPE
BLVD
6627
3233
613
611
6247
3256
3257
6664
3260

WHITTIER
BLVD
6629
6628
4318
9450
6631
6632

MINES
BLVD
3707
3262
3708
3709
3713
3714
3719
7446
3721

WASHINGTON

SLAUSON AVE

SORENSEN AVE

SANTA FE

BLVD

LAMBERT AVE

AVE

RIVERA

NORWALK

LOS NIETOS

RD

PAINTER

NORWALK

QUAD

MILLS

BROADWAY

RD

COLIMA

LA

TELEGRAPH

RD

RD

LF

6675
8723
1840

9205
1838
1837

7449
9204
9203

9202
1830
1170
1169

8222
10054

9201
9200

1285
8220

8224
1162

6679
1160

8225
6680

6682
6681

9116
8616

9444
9445

6673

6665
6666

3266

3707
3262

6667
6668

6669
6670

6667
6668

6665
6666

3266

3707
3262

6669
6670

7446
3721

3724
3723

8199
8200

8203
3942
3944

8204
8205

2532

3736
8192

1209
6635

9449
1212

8180
8183
8182

9449
1212

2536
2537

2538
2539

2540
2542

2544
2545

6700
3443

2549
2550

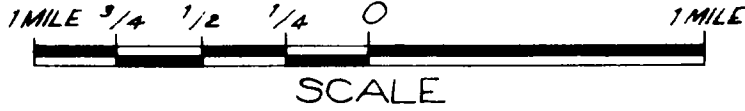
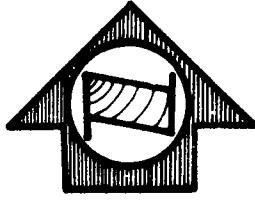
8218
2552

8219
6286

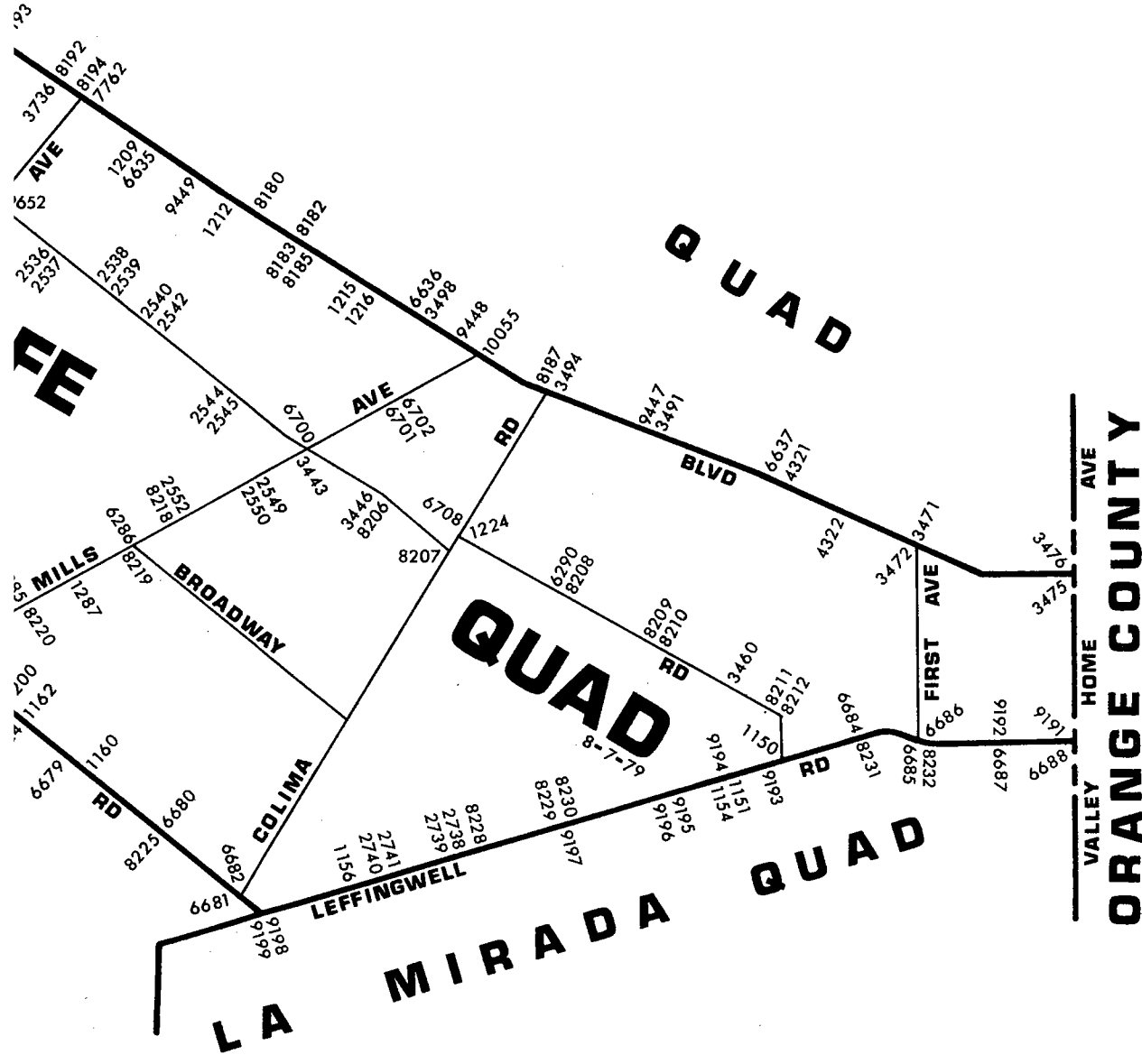
1287

6682
6681

9116
8616



LIGHT SOLID LINES WITHOUT NUMBERS INDICATE PREVIOUS LINES OF BENCH MARKS THAT ARE NOT INCLUDED IN THE 1980 ADJUSTMENT.



QUAD-YEAR	ELEV	DESCRIPTION (INCLUDE QUAD AND YEAR IN DESCRIPTION)	BM NUMBER
BASELINE (1975)	73.432	4.5 IN IP WITH L&T 6IN BACK WK ON SE COR PARAMOUNT BLVD & ROSECRANS AVE 244FT S C/L 50FT E C/L INT MKD (LAC 32)	CY 288
BASELINE (1975)	92.748	L&T 5FT E CB RET @ NE COR SYCAMORE ST & SAN ANTONIO DR 74FT E & 18FT N C/L INT	CY 445
BASELINE (1975)	73.117	CS REF MON IN WELL 14IN DN ON NE COR ALONDRA BLVD & WOODRUFF AVE 56FT N & 60FT E/O C/L INT MKD (CLEARWATER K 2A)	CY 473
BASELINE (1975)	73.744	CSBM MON FL ON NW COR ALONDRA BLVD & WOODRUFF AVE 39FT N & 180FT W C/L INT MKD (BM 6-6A1958)	CY 474
BASELINE (1975)	74.723	L&N 18FT E C/L ENCALYPTUS AVE & 80FT S C/L ALONDRA BL	CY 477
BASELINE (1975)	75.185	L & T 15FT E C/L LEAHY AVE & 80FT N C/L ALONDRA BL	CY 478
BASELINE (1975)	75.165	L & T 15FT W C/L LEAHY AVE & 80FT N C/L ALONDRA BL	CY 479
BASELINE (1975)	169.546	L&SPK CTR OF WK 3FT E FLAGPOLE @ WEST WHITTIER SCHOOL 51FT W C/L NORWALK BLVD & 250FT N C/L BEXLEY DR TO THE W	CY 611
BASELINE (1975)	169.691	L&T W CB 3FT N BCR @ NW COR LOCH AVON DR TO THE W & NORWALK BLVD 45FT N & 28FT W/O C/L INT	CY 613
BASELINE (1975)	80.782	RD HD SPK&L W CB 28FT N BCR @ NW COR WOODRUFF AVE & WASHINGTON ST 70FT N & 40FT W C/L INT MKD (MV 26)	CY 695
BASELINE (1975)	87.493	FC BRONZE DISC @ SW COR DAIRY PLATFORM 75FT N C/L ROSECRANS AVE 300FT E SAN GABRIEL RIVER BRIDGE (BM 75-9C)	CY 697
BASELINE (1975)	84.396	L&N 1FT E BCR @ SE COR ROSECRANS AVE & CROSSDALE AVE 40FT S & 50FT E C/L INT	CY 699
BASELINE (1975)	84.684	L&N 1FT E BCR @ SE COR ROSECRANS AVE & ELMCROFT AVE 40FT S & 50FT E C/L INT	CY 700
BASELINE (1975)	85.053	L&N 1FT E BCR @ SE COR ROSECRANS AVE & GARD AVE 38FT S & 50FT E C/L INT	CY 702
BASELINE (1975)	86.646	L&N 1FT S BCR @ SE COR ROSECRANS AVE & JERSEY AVE 68FT S & 18FT E C/L INT	CY 703

QUAD-YEAR	ELEV	DESCRIPTION (INCLUDE QUAD AND YEAR IN DESCRIPTION)	BM NUMBER
BASELINE (1975)	86.391	CS MON IN WELL 13IN DN ON NW COR ROSECRANS AVE & PICNEER BLVD 86FT N & 40FT W C/L INT MKD (WHITTIER C 124 1959)	CY 706
BASELINE (1975)	86.923	RDBM MON FLUSH IN CONC SQ POST ON SW COR ROSECRANS AVE & ARLEE AVE 83FT S & 20FT W C/L INT MKD (BM 184)	CY 707
BASELINE (1975)	71.783	L&T 2FT W CB RET NW COR RYON AVE & ALONDRA BLVD 38FT N & 32FT W C/L INT	CY 763
BASELINE (1975)	73.661	L&BN S CB ALONDRA BLVD 6IN E CB RET @ SE COR ALONDRA BLVD & PACIFIC AVE 70FT W PERR	CY 765
BASELINE (1975)	68.586	L & SPK 4FT E CB RET @ NE COR CLARK AVE & ALONDRA BLVD 38FT N & 59FT E C/L INT	CY 766
BASELINE (1975)	69.592	L&T C/L INT VIRGINIA DR & ALONDRA BLVD	CY 767
BASELINE (1975)	68.374	L&T C/L INT PITTS AVE & ALONDRA BLVD	CY 769
BASELINE (1975)	108.417	L&SPK IN WK 55FT N/O C/L COLE ST & 50FT W/O C/L PARAMOUNT BLVD MKD (0-31)	CY 773
BASELINE (1975)	104.856	L&T 14FT E C/L PARAMOUNT BLVD 11FT N C/L SPRINGER ST PROD IN CONC PVMT	CY 777
BASELINE (1975)	103.961	L&T IN CONC 14FT E C/L PARAMOUNT BLVD 4FT N C/L QUILL DR PROD	CY 778
BASELINE (1975)	90.416	L & T 1FT N BCR @ NE COR PARAMOUNT BLVD & ADOREE AVE 58FT N & 38FT E C/L INT	CY 779
BASELINE (1975)	82.561	CS MON 16FT W & 5FT S INT PARAMOUNT BLVD & GARDENDALE ST	CY 783
BASELINE (1975)	77.754	L & T 10FT S BCR INTO CB RET @ NE COR PARAMOUNT BLVD & CENTURY BLVD 2FT N & 41FT E C/L INT	CY 791
BASELINE (1975)	76.271	BT SPK 1FT S BCR @ SW COR PARAMOUNT BLVD & PEARLE ST 32FT S & 38FT W C/L INT MKD (H-110)	CY 792
BASELINE (1975)	75.489	BT SPK BCR @ SW COR PARAMOUNT BLVD & HOWE ST 30FT S & 38FT W C/L INT	CY 793
BASELINE (1975)	76.316	BT SPK CTR CB RET @ NW COR PARAMOUNT BLVD & ROSE ST 18FT N & 40FT W C/L INT MKD (H 112)	CY 794
BASELINE (1975)	71.548	L & T IN CB 38FT W C/L PARAMOUNT BLVD ON THIRD ST C/L PRGD	CY 795

QUAD-YEAR	ELEV	DESCRIPTION (INCLUDE QUAD AND YEAR IN DESCRIPTION)	BM NUMBER
BASELINE (1975)	72.315	CS MON 17FT W/O C/L PARAMOUNT BLVD ON C/L COMPTON BLVD MKD (RE 2177 CLEARWATER)	CY 797
BASELINE (1975)	68.556	L&T W CB PARAMOUNT BLVD 2FT N CB RET @ NW COR MADISON ST & PARAMOUNT BLVD	CY 799
BASELINE (1975)	73.494	L&T IN S CB ALONDRA BLVD 1FT E INTO RET 68FT W C/L WOODRUFF AVE & 38FT S/O C/L ALONDRA BLVD	CY 960
LAMIRADA (1980)	256.772	CS MON IN WELL 12IN DN @ OR NR C/L INT IMPERIAL HWY & SANTA GERTRUDES AVE MKD (AUX LA HABRA A 10 A)	CY 1140
LAMIRADA (1980)	256.376	RDBM TAG IN W CB 1FT S/O BCR @ SW COR FIRST AVE & SHARONHILL DR 32FT W & 60FT S C/L INT	CY 1146
BASELINE (1975)	241.277	L&BN IN CB 36FT E BCR @ NE COR LEFFINGWELL RD & SANTA GERTRUDES AVE 40FT N & 145FT E C/L INT 1FT W/O ENT CATCH BASIN	CY 1150
BASELINE (1975)	234.470	L&BN IN CB 40FT S C/L LEFFINGWELL RD & 36 FT E C/L PROD EL ARCO DR OPP PP NO 1173876E	CY 1151
BASELINE (1975)	228.493	CS MON IN WELL 12IN DN 40FT S/O C/L LEFFINGWELL RD 2FT S/O S CB & 619FT E/O C/L SCOTT AVE MKD (RM 2 LA HABRA A 9 1960)	CY 1154
BASELINE (1975)	212.402	C S MON IN WELL ON C/L LEFFINGWELL RD 100FT W HSE NO 14701 & GPP PP NO 662000E MKD (WHITTIER J 9 AUX 1 1960)	CY 1156
BASELINE (1975)	175.276	L&SPK N BCR @ NE COR TELEGRAPH RD & CERES ST 61FT N & 20FT E C/L INT MKD (WZ 399)	CY 1160
BASELINE (1975)	134.408	L&T N CB 1FT W BCR @ NW COR TELEGRAPH RD & VICTORIA AVE 42FT N & 48FT W C/L INT	CY 1162
BASELINE (1975)	157.074	L&T N CB 3FT E OF BCR @ NE COR TELEGRAPH RD & CARMENITA RD 38FT N & 50FT E C/L INT	CY 1169
BASELINE (1975)	156.199	CS MON IN WELL 14IN DN 15FT S & 25FT E C/L INT TELEGRAPH RD & CARMENITA RD MKD (WHITTIER G 8 1942)	CY 1170
NORWALK (1980)	109.115	L&T ELY CB 7FT NLY BCR @ NELY COR LEFFINGWELL RD & MEYER RD 48FT NLY & 40FT ELY APPROX C/L INT	CY 1186
BASELINE (1975)	238.105	RDBM TAG IN CONC RETAINING WALL 6FT S CB FACE 54FT S & 45FT W C/L INT WHITTIER BLVD & LAUREL	CY 1209

QUAD-YEAR	ELEV	DESCRIPTION (INCLUDE QUAD AND YEAR IN DESCRIPTION)	BM NUMBER
BASELINE (1975)	236.484	L&T IN N CB PKWY @ BCR 48FT S & 30FT W/O C/L INT WHITTIER BLVD & BOYER AVE	CY 1212
BASELINE (1975)	266.222	L&SPK S CB WHITTIER BLVD 40FT S/O C/L & 136FT E/O C/L PROD CATALINA AVE MKD (WZ127)	CY 1215
BASELINE (1975)	264.306	L & T 1FT W BCR 40FT S & 30FT W C/L INT AVE & WHITTIER BLVD	CY 1216
SANTA FE (1980)	204.747	L&T W CB COLIMA RD 35FT S/O C/L & 42FT W/O C/L CARNELL AVE	CY 1224
SANTA FE (1980)	137.944	L & T NE COR CONC WK @ SW COR MILLS AVE & CLOSE ST 100FT W & 53 S C/L INT	CY 1285
SANTA FE (1980)	142.426	L & T 2FT S BCR @ SE COR MILLS AVE & ANOLA ST 30FT E & 37FT S C/L INT	CY 1287
BASELINE (1975)	125.802	RDBM TAG N CB 1FT E BCR @ NE COR PARAMOUNT BLVD & FLORENCE AVE 40FT N & 68FT E C/L INT	CY 1299
BASELINE (1975)	131.157	RDBM TAG IN S CB TELEGRAPH RD 2FT W/O SW CB RET @ MAIN DRWY TO SANTA FE SPRINGS FIRE STA BLDG NO 11736 40FT S/O C/L TELEGRAPH RD & 390FT W/O C/L PIONEER BLVD	CY 1345
BASELINE (1975)	131.516	CS MON IN WELL @ C/L INT TELEGRAPH RD & ALBURTIS AVE NLY MKD (LACS CON SYS TRA STA WHITTIER B-7 RE2177 1941)	CY 1348
BASELINE (1975)	124.480	CS BR CAP CONC MON IN WELL @ C/L INT PARAMOUNT BLVD & FLORENCE AVE	CY 1386
BASELINE (1975)	127.200	L & BRAD CTR CB RET SE COR LUBEC ST & PARAMOUNT BLVD 25FT S & 52FT E C/L INT	CY 1387
BASELINE (1975)	127.420	L & BRAD CTR CB RET NE COR LUBEC ST & PARAMOUNT BLVD 27FT N & 52FT E C/L INT	CY 1388
BASELINE (1975)	130.387	L&BN W CB PARAMOUNT BLVD @ NLY P L HSE NO 9603 33FT W/O C/L PARAMOUNT BLVD	CY 1389
BASELINE (1975)	131.832	L & T CONC CB @ BCR SE COR SUVA ST & PARAMOUNT BLVD 48FT S & 38FT E C/L INT MKD (BM)	CY 1390
BASELINE (1975)	134.278	L & T IN CONC CB @ BCR @ SW COR GALLATIN RD & PARAMOUNT BLVD 53FT S & 38FT W C/L INT	CY 1392
BASELINE (1975)	138.485	SQ HD SPK W CB OF SERVICE RD OF PARAMOUNT BLVD 12FT N C/L PROD BROOKGREEN RD	CY 1394

QUAD-YEAR	ELEV	DESCRIPTION (INCLUDE QUAD AND YEAR IN DESCRIPTION)	BM NUMBER
BASELINE (1975)	139.448	L&BR E CB 1FT S/O BCR @ SE COR PARAMOUNT BLVD & VISTA DEL ROSA SERVICE ISLAND 40FT E & 50FT S C/L INT	CY 1395
BASELINE (1975)	142.010	CS MON IN WELL 8IN DN ON C/L TELEGRAPH RD 20FT WLY C/L PARAMOUNT BLVD MKD (BELL K4 1941)	CY 1397
BASELINE (1975)	142.613	L&BN 4FT S BCR @ SW COR BIRCHBARK AVE & TELEGRAPH RD 80FT S & 18FT W/O C/L INT	CY 1593
BASELINE (1975)	144.974	L&BN 4FT S BCR @ SW COR STAMPS RD & TELEGRAPH RD 78FT S & 18FT W/O C/L INT	CY 1594
BASELINE (1975)	138.576	RAM SET CTR CB RET SE COR LAKEWOOD BLVD & TELEGRAPH RD 55FT S & 55FT E C/L INT	CY 1596
BASELINE (1975)	137.775	CS MON MKD (LACO SUR TRAVERSE STA BELL K-5A RE2177 1941) IN WELL W/COVER @ CL INT TELEGRAPH RD & LAKEWOOD BLVD	CY 1597
BASELINE (1975)	138.368	L&T S END W GAS ISLAND NE COR TELEGRAPH RD & SERAPIS AVE 67FT N & 61FT E/O C/L INT	CY 1599
BASELINE (1975)	137.134	L&T IN S CB TELEGRAPH RD 6FT W/O CB RET @ SE COR SERAPIS AVE 40FT S & 50FT E/O C/L INT	CY 1600
BASELINE (1975)	141.124	L&BN 1FT FROM BCR SERVICE RD N CB @ PASSONS BLVD & TELEGRAPH RD 50FT S C/L TELEGRAPH RD	CY 1601
BASELINE (1975)	138.138	L&B W ECR @ SW COR TRUE AVE & TELEGRAPH RD (SERVICE RD) 47FT W & 15FT S/O C/L INT TRUE AVE & TELEGRAPH RD (SERVICE RD)	CY 1708
BASELINE (1975)	137.232	CS BR CAP CONC MON IN CASING & COVER PI 6.82FT E C/L INT TRUE AVE & TELEGRAPH RD	CY 1709
BASELINE (1975)	157.383	L&T W CB 18FT N/O BCR @ NW COR TELEGRAPH RD & LAUREL AVE 68FT N & 20FT W C/L INT	CY 1830
BASELINE (1975)	151.281	CS MON IN WELL 8IN DN @ OR NR C/L INT TELEGRAPH RD & BLOOMFIELD AVE MKD (WHITTIER E7-A)	CY 1837
BASELINE (1975)	153.136	L&T 1FT N SE COR 1ST CONC STEP 70FT N C/L TELEGRAPH RD & 67FT W C/L BLOOMFIELD AVE	CY 1838
BASELINE (1975)	143.396	L & BN NE COR CONC BASE OIL DERRICK SW COR WILLIS ST & TELEGRAPH RD 40FT S & 43FT W C/L INT	CY 1840
BASELINE (1975)	89.914	RDBM TAG S CB ROSECRANS AVE 40FT S C/L @ ANG PT OF CB TO BRIDGE OVER SAN GABRIEL RIVER 500FT W BRIDGE	CY 1989

QUAD-YEAR	ELEV	DESCRIPTION (INCLUDE QUAD AND YEAR IN DESCRIPTION)	BM NUMBER
BASELINE (1975)	83.353	L & T 6FT W BCR @ SW COR PARAMOUNT BLVD & GARDENDALE ST 35FT S & 59FT W C/L INT	CY 2041
BASELINE (1975)	66.220	L&T CTR CB RET @ SE COR ALONDRA BLVD & DOWNEY AVE 48FT S & 47FT E C/L INT	CY 2343
BASELINE (1975)	98.713	L&BN N CB ROSECRANS AVE NE COR BRIDGE OVER SAN GABRIEL RIV 1FT W OF E END OF BRIDGE 23FT N C/L ROSECRANS AVE	CY 2495
BASELINE (1975)	101.072	L&BN N CB ROSECRANS AVE @ NW COR BRIDGE OVER SAN GABRIEL RIV 1FT E OF W END OF BRIDGE 23FT N C/L ROSECRANS AVE	CY 2496
SANTA FE (1980)	175.339	CS MON IN WELL 12IN DN @ OR NR C/L INT LAMBERT RD & PAINTER AVE MKD (CO ENG MON RE 5869) USE ELY EDGE	CY 2532
SANTA FE (1980)	176.593	L&T W CB 1FT S BCR @ SW COR LAMBERT RD & LAUREL AVE 65FT S & 20FT W C/L INT	CY 2536
SANTA FE (1980)	177.404	L & BN 1FT E BCR @ SE COR LAMBERT RD & LAUREL AVE 32FT S & 65FT E C/L INT	CY 2537
SANTA FE (1980)	178.335	RDBM TAG S CB LAMBERT RD 32FT S/O C/L & 8FT W/O C/L PROD TARRYTON AVE	CY 2538
SANTA FE (1980)	177.220	L & BN 1FT W BCR @ SW COR LAMBERT RD & COACHMAN AVE 32FT S & 55FT W C/L INT	CY 2539
SANTA FE (1980)	179.740	L & BN S CB LAMBERT RD 32FT S C/L 3FT W C/L PROD EDMARU AVE 310FT W C/L CALMADA AVE	CY 2540
SANTA FE (1980)	180.910	RDBM TAG W CB 1FT S/O BCR @ SW COR LAMBERT RD & CALMADA AVE 75FT S & 18FT W/O C/L INT	CY 2542
SANTA FE (1980)	190.652	RDBM TAG S CB 1FT W BCR @ SW COR LAMBERT RD & GUNN AVE 30FT S & 66FT W C/L INT	CY 2544
SANTA FE (1980)	191.928	L & BN 60FT E BCR @ SE COR LAMBERT RD & GUNN AVE 30FT S & 85FT E C/L INT	CY 2545
SANTA FE (1980)	185.462	L & T NE COR CONC STEP HSE NO 9665 60FT W C/L MILLS AVE & 550FT S LAMBERT RD	CY 2549
SANTA FE (1980)	176.520	L&T NE COR CONC STEP HSE NO 9753 MILLS AVE 60FT W C/L 1050FT S LAMBERT RD	CY 2550
SANTA FE (1980)	156.248	L&T N CB 6FT W BCR @ NW COR MILLS AVE & MULBERRY DR 40FT N & 68FT W C/L INT	CY 2552

QUAD-YEAR	ELEV	DESCRIPTION (INCLUDE QUAD AND YEAR IN DESCRIPTION)	BM NUMBER
BASELINE (1975)	67.421	L&T NR W END OF CONC WK AROUND HSE #8700 ALONDRA BLVD 57FT S & 25FT E C/L INT ALONDRA BLVD & HAYTER ST	CY 2589
BASELINE (1975)	67.392	LACS MON 30FT N & 70FT E C/L INT ALONDRA BLVD & CLARK AVE MKD (BM 6-8 1951)	CY 2596
BASELINE (1975)	73.279	L&T N CB 4FT W CB RET @ NW COR ALONDRA BLVD & BLAINE AVE 38FT N & 35FT W C/L INT	CY 2597
BASELINE (1975)	73.411	L&T IN N CB 3FT E CB RET @ NE COR ALONDRA BLVD & BLAINE AVE 38FT N & 32FT E C/L INT	CY 2598
BASELINE (1975)	74.110	L&BN S CB 1FT W CB RET @ SW COR ALONDRA BLVD & BELLFLOWER BLVD 46FT W & 38FT S C/L INT	CY 2600
BASELINE (1975)	216.571	L&T IN DEP CB DRWY TO GAS STATION 2FT E/O BCR @ NW COR LA MIRADA BLVD & LEFFINGWELL RD 40FT N & 60FT W/O C/L INT	CY 2738
BASELINE (1975)	216.689	L & T IN S CB 7FT E BCR 41FT S & 50FT W C/L INT LEFFINGWELL RD & LA MIRADA BLVD	CY 2739
BASELINE (1975)	191.456	L&BN W END CATCH BASIN N SIDE LEFFINGWELL RD 40FT N C/L & 450FT W C/L LA MIRADA BLVD 500FT E C/L ARROYO DR	CY 2740
BASELINE (1975)	186.266	L&BN 1FT W BCR @ SW COR LEFFINGWELL RD & ARROYO DR 40FT S & 50FT W C/L INT	CY 2741
BASELINE (1975)	65.358	L&BN W CB 7FT N OF BCR @ SW COR ALONDRA BLVD & VALLEY VIEW AVE 68FT S & 40FT W C/L INT	CY 2771
BASELINE (1975)	94.678	L&SPK N CB 4FT E BCR @ NE COR VALLEY VIEW AVE & STAGE RD 30FT N & 60FT E C/L INT CB MKD (RBM 1)	CY 2776
BASELINE (1975)	94.712	USC&GS MON FLUSH ON NE COR VALLEY VIEW AVE & STAGE RD 31.5FT N & 87FT E C/L INT 1.5FT N CB MKD (K 778-1945)	CY 2777
BASELINE (1975)	94.210	L&BN NR CTR OF BRIDGE NO 1273 40FT E/O C/L VALLEY VIEW AVE 800FT S FOSTER RD 137FT N C/L MAZSA DR	CY 2782
BASELINE (1975)	94.655	CS MON IN WELL 10IN DN ON NE COR VALLEY VIEW AVE & FOSTER RD 62FT N & 41FT E C/L INT 1FT BACK CB MKD (BM 1#6A 1961)	CY 2785
BASELINE (1975)	105.922	L&BN E CB 1FT N BCR @ NE COR VALLEY VIEW AVE & ADOREE ST TO THE E 57FT N & 38FT E/O C/L INT	CY 2786

QUAD-YEAR	ELEV	DESCRIPTION (INCLUDE QUAD AND YEAR IN DESCRIPTION)	BM NUMBER
BASELINE (1975)	115.829	L&BN E CB 1FT S BCR @ SE COR VALLEY VIEW AVE & IMPERIAL HWY 76FT S & 38FT E C/L INT	CY 2788
BASELINE (1975)	104.350	L & T 18FT S C/L SPRINGER ST & 70FT W C/L PARAMOUNT BLVD 8FT W BCR @ SW COR IN CB	CY 3168
BASELINE (1975)	110.277	L & B 1FT W BCR @ SW COR DE PALMA ST & PARAMOUNT BLVD 18FT S & 74FT W C/L INT	CY 3173
BASELINE (1975)	111.336	L & BRAD 1FT W BCR @ NW COR CLETA ST & PARAMOUNT BLVD 18FT N & 75FT W C/L INT	CY 3174
BASELINE (1975)	112.152	L&T 2FT W/O BCR @ SW COR BROOKMILL RD & PARAMOUNT BLVD 18FT S & 77FT W/O C/L INT	CY 3175
BASELINE (1975)	115.822	LACS MON IN WELL @ C/L INT 2ND ST & PARAMOUNT BLVD (USE S EDGE)	CY 3182
BASELINE (1975)	123.950	L & T 2FT S BCR @ SW COR PARAMOUNT BLVD & FARM ST 55FT S & 38FT W C/L INT	CY 3183
BASELINE (1975)	175.876	CS BR CAP MON 3FT SW OF C/L INT NORWALK BLVD & WHITTIER BLVD TO THE N MKD (WHITTIER B-2 RE 329 1949)	CY 3253
BASELINE (1975)	166.617	L&BR W CB 2FT S/O BCR @ NW COR ROSEHEDGE DR & NORWALK BLVD 54FT N & 33FT W/O C/L INT	CY 3256
BASELINE (1975)	164.690	L&SPK E CB 5FT S BCR @ SE COR DUNLAP CROSSING RD (MINES BLVD) & NORWALK BLVD 38FT E & 77FT S C/L INT	CY 3257
BASELINE (1975)	162.031	L&BN E CB 1FT S BCR @ SE COR FLORY ST & NORWALK BLVD 54FT S & 38FT E/O C/L INT	CY 3260
BASELINE (1975)	160.827	RE TAG NO 2059 6FT NW OF WALK TO HSE NO 7608 50FT E/O & 112FT S/O C/L INT NORWALK BLVD & CHOISSER ST	CY 3262
BASELINE (1975)	153.957	L&BN W CB 1FT N BCR @ NW COR WADDELL ST & NORWALK BLVD 38FT W & 60FT N C/L INT	CY 3266
BASELINE (1975)	83.725	L&T 1FT N BCR @ NW COR STUDEBAKER RD & ROSECRANS AVE 81FT N & 52FT W C/L INT	CY 3364
SANTA FE (1980)	194.499	L&BRAD E CB 4FT SO OF BCR @ SE COR MILLS AVE & LAMBERT RD 52FT SO & 30FT E C/L INT	CY 3443
SANTA FE (1980)	196.567	RD HD SPK E CB 8FT SO OF BCR @ SE COR LAMBERT RD & BONAVISTA LANE 85FT SO & 18FT E C/L INT MKD (W2 455)	CY 3446

QUAD-YEAR	ELEV	DESCRIPTION (INCLUDE QUAD AND YEAR IN DESCRIPTION)	BM NUMBER
SANTA FE (1980)	227.819	L & T 4FT W BCR @ SW COR LAMBERT RD & KIBBE AVE 32FT S & 55FT W C/L INT	CY 3460
BASELINE (1975)	291.296	C S MON 100FT S C/L WHITTIER BLVD & 5FT E C/L FIRST AVE MKD (BM 3-17 1961)	CY 3471
BASELINE (1975)	292.123	L & SPK 48FT W BCR 40FT S & 90FT W C/L INT WHITTIER BLVD & FIRST AVE MKD (BM NO 2)	CY 3472
BASELINE (1975)	332.930	CS BM MON 1FT BACK OF CB @ NE COR WHITTIER BLVD & VALLEY HOME AVE 52FT N & 24FT E/O C/L INT MKD (38-1 1964)	CY 3475
BASELINE (1975)	333.948	L & BN @ S END C B 1FT N BCR 55FT N & 20FT E C/L INT WHITTIER BLVD & VALLEY HOME AVE	CY 3476
BASELINE (1975)	248.797	STATE BR CAP E END CATCH BASIN 40FT N C/L WHITTIER BLVD 266FT E C/L SCOTT AVE	CY 3491
BASELINE (1975)	262.829	L&T NE COR CONC WK AROUND GAS STA NO 15020 120FT S C/L WHITTIER BLVD 60FT W C/L COLE RD	CY 3494
BASELINE (1975)	248.885	L&SPK N CB OF SERVICE RD 18FT E BCR @ NE COR LA ENTRADA AVE & WHITTIER BLVD 15FT N & 61 FT E/O C/L INT SERV RD	CY 3498A
BASELINE (1975)	160.785	RAM SET NR CTR CB RET ON SE COR CHOISSER ST & NORWALK BLVD 29FT S & 45FT E/O C/L INT	CY 3707
BASELINE (1975)	157.715	RAMSET IN W CB 3FT N/O BCR @ NW COR WASHINGTON BLVD & NORWALK BLVD 135FT N & 38FT W/O C/L INT	CY 3708
BASELINE (1975)	158.106	CE BR CAP FL IN ISL NW COR WASHINGTON BLVD & NORWALK BLVD 81FT N & 32FT W/O C/L INT MKD (BM 2-14A 1961 RE 5869)	CY 3709
SANTA FE (1980)	154.572	L&T 15FT ELY BCR @ NW COR BROADWAY & WASHINGTON BLVD 44FT N & 40FT W/O C/L INT MKD (BM)	CY 3713
SANTA FE (1980)	154.281	L & T 5FT NLY CTR CB RET ON SE COR BROADWAY & WASHINGTON BLVD 44FT S & 40FT E C/L INT	CY 3714
SANTA FE (1980)	154.286	L&T WLY CB 9FT SLY BCR @ NWLY COR SORENSEN AVE & WASHINGTON BLVD 68FT NLY & 40FT WLY C/L INT MKD (BM)	CY 3719
SANTA FE (1980)	154.209	RDBM TAG 1FT W/O BCR @ NW COR 40FT N & 51FT W/O C/L INT WASHINGTON BLVD & APPLIEDALE AVE MKD (SD 152)	CY 3721
SANTA FE (1980)	156.181	L & BN 1FT W BCR IN N CB OF PKWY @ NW COR 50FT N & 37FT W C/L INT CROWDALE AVE & WASHINGTON BD	CY 3724

QUAD-YEAR	ELEV	DESCRIPTION (INCLUDE QUAD AND YEAR IN DESCRIPTION)	BM NUMBER
SANTA FE (1980)	156.739	L & BN 1FT E BCR @ NE COR 38FT N & 52FT E C/L INT CROWDALE AVE & WASHINGTON BLVD	CY 3725
BASELINE (1975)	220.390	RD BM TAG CB 1FT N ECR @ SE COR WHITTIER BLVD & COMSTOCK AVE 74FT S & 18FT W C/L INT	CY 3732
BASELINE (1975)	231.557	RD BM TAG CB 3FT N ECR @ SE COR WHITTIER BLVD & WASHINGTON AVE 72FT S & 15FT E C/L INT	CY 3736
BASELINE (1975)	213.012	STATE HWY BR MON FL IN ISLAND @ BC OF CURVE 200FT WLY C/L WASHINGTON BLVD 4FT NLY S CB OF ISLAND CN WHITTIER BLVD	CY 3740A
SANTA FE (1980)	170.210	L&BN IN CB ON SW COR LAMBERT RD & SANTA FE SPRINGS RD 30FT S & 94FT W C/L INT	CY 3942
SANTA FE (1980)	171.614	RAM-SET 2FT E CB RET @ NE COR NEWLIN AVE & LAMBERT RD 52FT E/O C/L NEWLIN AVE & 30FT N/O LAMBERT RD	CY 3944
LAMIRADA (1980)	300.590	RD BM TAG S CB 1FT E BCR @ SE COR IMPERIAL HWY & FIRST AVE 40FT S & 56FT E C/L INT	CY 3997
LAMIRADA (1980)	299.952	CS TRI MON IN WELL 10IN DN @ OR NEAR C/L INT IMPERIAL HWY & FIRST AVE MKD (LA HABRA B-10-A)	CY 3998
LAMIRADA (1980)	268.135	L & T IN S CB 40FT S & 48FT W/O C/L INT IMPERIAL HWY & CLEARGLEN AVE IN FRONT P P NO 1254813E MKD (BM)	CY 3999
LAMIRADA (1980)	255.791	RD BM TAG E CB 1FT S BCR @ SE COR FIRST AVE & AMBER VALLEY DR 56FT S & 30 E C/L INT	CY 4006
LAMIRADA (1980)	268.659	L&BN N END CONC APRON TO GARAGE OF HSE NO 13117 80FT W & 15FT S/O C/L INT SANTA GERTRUDES AVE & GLAZEBROOK DR.	CY 4029
LAMIRADA (1980)	223.188	L&BRAD S CB 11FT E BCR @ SE COR ALICANTE RD & SANTA GERTRUDES AVE 30FT S & 95FT E C/L INT	CY 4032
NORWALK (1980)	158.748	L&SPK NR SE COR CONC WK 66FT W CARMENITA RD & 81FT N C/L BEATY AVE NR SE COR OF BLDG	CY 4312
NORWALK (1980)	166.672	L&BR IN S CB LAKELAND RD 10FT W/O BCR 32FT S & 77FT W/O C/L INT LAKELAND RD & CARMENITA RD	CY 4314
NORWALK (1980)	168.681	L&T NR S EDGE OF CONC DRWY HSE NO 10762 CARMENITA RD 124FT N/O SUNDANCE AVE & 57FT E/O C/L CARMENITA RD MKD (BM)	CY 4317

QUAD-YEAR	ELEV	DESCRIPTION (INCLUDE QUAD AND YEAR IN DESCRIPTION)	BM NUMBER
BASELINE (1975)	231.869	CS MON IN WELL 13FT S OF N CB WHITTIER BLVD & 50FT W APPROX C/L SORENSEN AVE MKD (WHITTIER G-3 1948)	CY 4318
BASELINE (1975)	210.644	RDBM TAG CONC @ SW COR CTR CONC PIER UPRR BRIDGE OVER WHITTIER BLVD 150FT ELY C/L WASHINGTON BLVD	CY 4319
BASELINE (1975)	279.117	RD BM TAG SLY END RETAINING WALL ENT DR IN MARKET 36FT NLY C/L RUSSELL ST & 125FT ELY C/L INT WHITTIER BLVD & SANTA GERTRUDES AVE	CY 4321
BASELINE (1975)	279.200	STATE HWY BR CAP W END CATCH BASIN 40FT N C/L WHITTIER BLVD & 18FT W C/L PROD VIRGINIA AVE	CY 4322
NORWALK (1980)	163.360	RDBM TAG 40FT W C/L CARMENITA RD ON S P/L HSE NO 10615 400FT S/O BARRETT ST IN FRONT OF PP # W4623Y	CY 6132
BASELINE (1975)	166.653	LA CO ENGR BR CAP NLY END C B 79FT N & 37FT W/O C/L INT ROSEHEDGE DR & NORWALK BLVD MKD (BM 2-16 1961 RE 5869)	CY 6247
SANTA FE (1980)	149.812	L&T S CB 1FT E BCR @ SE COR MILLS AVE & BROADWAY 20FT S & 50FT E C/L INT MKD (WZ 169)	CY 6286
SANTA FE (1980)	206.455	LA CO RD DEPT BM TAG W CB @ NO END OF CATCH BASIN 20FT W C/L COLE RD & 73FT S C/L DITTMAR DR	CY 6290
LAMIRADA (1980)	257.525	L&BN CTR CB RET @ NE COR IMPERIAL HWY & SANTA GERTRUDES AVE 50FT N & 40FT E C/L INT	CY 6308
LAMIRADA (1980)	280.796	L&T 1FT W/O BCR IN N CB S SE RD @ SW COR IMPERIAL HWY & BREEZEWOOD DR 58FT S & 35FT W/O C/L INT MKD (8M)	CY 6309
LAMIRADA (1980)	263.265	L&BRAD E CB SERVICE RD 5FT N BCR @ SE COR SANTA GERTRUDES AVE & FOSTER RD 33FT S & 71FT E/O C/L INT MKD (8M)	CY 6320
LAMIRADA (1980)	263.395	L&T E CB SERVICE RD 5FT N BCR @ NE COR SANTA GERTRUDES AVE & FOSTER RD 45FT N & 74FT E C/L INT MKD (8M)	CY 6321
LAMIRADA (1980)	250.766	CS BM BRASS DISK IN SW COR CULVERT 33FT E C/L FIRST AVE & 236FT N/O AMBER VALLEY DR MKD (BM3-15A 1961)	CY 6326
LAMIRADA (1980)	273.469	RD BM TAG W CB 1FT N BCR @ NW COR FIRST AVE & CANDLELIGHT DR 58FT N & 32FT W C/L INT	CY 6327

QUAD-YEAR	ELEV	DESCRIPTION (INCLUDE QUAD AND YEAR IN DESCRIPTION)	BM NUMBER
LAMIRADA (1980)	276.739	RD BM TAG E CB 1FT S BCR @ SE COR FIRST AVE & CANDLELIGHT DR 56FT S & 32FT E C/L INT	CY 6328
BASELINE (1975)	177.549	RDBM TAG W CB 40FT N BCR @ NW COR WHITTIER BLVD & NORWALK BLVD 105FT N & 27FT W C/L INT	CY 6627
BASELINE (1975)	201.531	CS MON FL 1FT BACK E CB BROADWAY 29FT E C/L & 108FT N C/L WHITTIER BLVD MKD (BM 1-15A 1961)	CY 6628
BASELINE (1975)	198.651	L&T N CB 0.5FT E BCR @ NW COR BROADWAY & WHITTIER BLVD 27FT N & 66FT W C/L INT	CY 6629
BASELINE (1975)	233.402	RDBM TAG S CB @ C B 18FT E BCR @ SE COR WHITTIER BLVD & SORENSEN AVE 27FT S & 70FT E APPROX C/L INT	CY 6630
BASELINE (1975)	229.809	RDBM TAG N CB S SERV RD WHITTIER BLVD 125FT S C/L @ DR NR C/L PROD PENN ST	CY 6631
BASELINE (1975)	233.204	CS MON FL 1FT BACK S CB WHITTIER BLVD 31FT S/O C/L & 25FT E/O C/L PENN ST MKD (BM 1-14C 1961)	CY 6632
BASELINE (1975)	213.038	LACS MON FL IN SW COR C B 18FT N C/L N BBL WHITTIER BLVD & 86FT W C/L PICKERING AVE MKD (BM 1-14 AB 1961)	CY 6633
BASELINE (1975)	234.312	CAL HWY BR DISC @ W END OF C B 65FT W & 38FT S/O C/L INT BARTON RD & WHITTIER BLVD	CY 6635
BASELINE (1975)	248.539	LACS BM MON IN WELL 10IN DN IN DIVIDER STRIP 49FT N & 48FT E/O C/L INT WHITTIER BLVD & LA ENTRADA AVE MKD (1-11A)	CY 6636
BASELINE (1975)	274.102	CAL HWY MON FL IN SE COR C B ON N SIDE WHITTIER BLVD @ NW COR SANTA GERTRUDES AVE & RUSSELL ST 118FT N WHITTIER BLVD & 40FT E OF SANTA GERTRUDES AVE	CY 6637
BASELINE (1975)	164.866	SPK IN S CB 7FT E BCR @ SE COR MINES BLVD & NORWALK BLVD 84FT E & 38FT S C/L INT MKD (KW-28)	CY 6664
BASELINE (1975)	151.983	BT SPK W CB 8FT N BCR @ NW COR NORWALK BLVD & SLAUSON AVE 86FT N & 40FT W C/L INT	CY 6665
BASELINE (1975)	151.898	RDBM TAG E CB 2FT N BCR @ SE COR NORWALK BLVD & SLAUSON AVE 40FT E & 82FT S C/L INT	CY 6666
BASELINE (1975)	153.117	L&T E CB NORWALK BLVD 40FT E C/L ON C/L PROD BURKE ST	CY 6667

QUAD-YEAR	ELEV	DESCRIPTION (INCLUDE QUAD AND YEAR IN DESCRIPTION)	BM NUMBER
BASELINE (1975)	153.212	RDBM TAG E CB 2FT S BCR @ SE COR NORWALK BLVD & BURKE ST 40FT E & 35FT S C/L INT	CY 6668
BASELINE (1975)	155.134	RDBM TAG S CB 4FT W BCR @ SE COR NORWALK BLVD & LOS NIETOS RD 87FT E & 32FT S/O C/L INT	CY 6670
BASELINE (1975)	147.107	L&T CONC CB NR S SIDE OF BLDG @ 10122 NORWALK BLVD 50FT E C/L & 0.2MI N TELEGRAPH RD MKD (BM)	CY 6673
BASELINE (1975)	141.166	L&BN S CB 35FT W BCR @ SW COR TELEGRAPH RD & NORWALK BLVD 35FT S & 77FT W/O C/L INT MKD (BM)	CY 6675
BASELINE (1975)	167.341	L&T CTR CB RET @ ENT TO CANDLEWOOD CC 45FT S C/L TELEGRAPH RD @ BRAMBLEBUSH AVE	CY 6679
BASELINE (1975)	196.262	RDBM TAG 18FT E BCR @ NE COR 42FT N & 70FT E C/L INT VALLEY VIEW AVE & TELEGRAPH RD	CY 6680
BASELINE (1975)	187.285	L&T 5FT E BCR @ SW COR 54FT W & 43FT S C/L INT TELEGRAPH RD & COLIMA RD MKD (BM)	CY 6681
BASELINE (1975)	188.330	RDBM TAG 5FT W BCR @ SE COR 53FT E & 43FT S C/L INT TELEGRAPH RD & COLIMA RD	CY 6682
BASELINE (1975)	253.795	L&BN S CB 2FT E/O C B 180FT E/O C/L LAMBERT RD 40FT S C/L LEFFINGWELL RD	CY 6684
BASELINE (1975)	265.655	L&BN 2FT E/O BCR 36FT S & 48FT W/O C/L INT LEFFINGWELL RD & FIRST AVE MKD (BM)	CY 6685
BASELINE (1975)	267.058	RDBM TAG N CB 113FT E & 38FT N C/L INT LEFFINGWELL RD & FIRST AVE 2FT E FIRST C B	CY 6686
BASELINE (1975)	279.100	L&T S CB LEFFINGWELL RD 40FT S & 55FT E C/L INT TIGRINA AVE & LEFFINGWELL RD	CY 6687
BASELINE (1975)	293.678	BN @ NW COR 2FT E BCR 48FT W & 34FT N C/L INT VALLEY HOME AVE & LEFFINGWELL RD	CY 6688
SANTA FE (1980)	200.379	L&BN E CB 2FT N C B 30FT E & 257FT N C/L INT MILLS AVE & LAMBERT RD	CY 6700
SANTA FE (1980)	218.317	L&BRAD E CB 15FT S BCR @ SE COR MILLS AVE & CULLEN ST 73FT S & 30FT E C/L INT	CY 6701
SANTA FE (1980)	219.658	L&BN E CB 60FT N & 30FT E C/L INT MILLS AVE & CULLEN ST MKD (BM)	CY 6702
SANTA FE (1980)	202.226	CS MON NE COR C B 220FT N OF LAMBERT RD TO THE EAST & 41FT W/O C/L COLIMA RD MKD (BM 1-10C 1961)	CY 6708

QUAD-YEAR	ELEV	DESCRIPTION (INCLUDE QUAD AND YEAR IN DESCRIPTION)	BM NUMBER
LAMIRADA (1980)	133.624	L&BN N CB 1FT E BCR @ NE COR ASHGROVE DR & STANTON AVE 30FT N & 50FT E/O C/L INT MKD (BM)	CY 6998
LAMIRADA (1980)	132.847	L&BN W CB 1FT N BCR @ SW COR ASHGROVE DR & STANTON AVE 44FT S & 20FT W C/L INT MKD (BM)	CY 6999
BASELINE (1975)	162.399	L&BRAD ELY CB 12FT S BCR @ NELY COR VALLEY VIEW AVE & LEFFINGWELL RD 88FT N & 42FT E C/L INT	CY 7008
LAMIRADA (1980)	225.493	L & T IN W CB 40FT N/O N EDGE C B 32FT W & 1500 FT S C/L INT SANTA GERTRUDES AVE & FOSTER RD 260FT N/O AVENIDA SANTA TECLA MKD (BM)	CY 7009
LAMIRADA (1980)	228.894	L&BR N CB ALICANTE RD 40FT W BCR @ NW COR ALICANTE RD & SANTA GERTRUDES AVE 87FT W & 20FT N C/L INT	CY 7010
BASELINE (1975)	65.222	RR SPK IN CONC IN NE ABUT TO RR BR 9/40 300FT SLY SERVICE RD OF SANTA ANA FRWY & 1500FT WLY VALLEY VIEW AVE	CY 7015
BASELINE (1975)	65.973	COE BR CAP FL IN SE COR BR ON SERVICE RD OF SANTA ANA FRWY ABT 1500FT WLY VALLEY VIEW AVE MKD (CC37 BM 2-1B)	CY 7016
BASELINE (1975)	78.703	RDBM TAG ELY HDWL ON NELY COR CARMENITA RD & FIRESTONE BLVD 100FT NLY & 30FT ELY APPROX C/L INT	CY 7020
BASELINE (1975)	76.200	USC&GS MON IN S HDWL CULV 500 B ON SPRR ABT 355FT NW C/L SHOEMAKER AVE & 420FT S/O C/L FIRESTONE BLVD (S-97 1932)	CY 7022
BASELINE (1975)	94.142	CAL STATE BM MON IN CB FL WITH WK ON SW COR FIRESTONE BLVD & NORWALK BLVD 83FT S & 23FT W C/L INT	CY 7023
BASELINE (1975)	98.349	USC&GS DISK VERT IN WALL OF FORMER BANK OF NORWALK BLDG ON NWLY COR FRONT ST & CLARKDALE AVE (V98 1932)	CY 7024
BASELINE (1975)	82.286	CS MON 10IN DN NW COR ROSECRANS AVE & STUDEBAKER RD 49FT N & 90 FT W C/L INT MKD (BM6-2 1951)	CY 7026
BASELINE (1975)	80.445	L&T W CB 6FT S BCR @ SW COR WOODRUFF AVE & WASHINGTON ST 50FT S & 40FT W C/L INT	CY 7027
BASELINE (1975)	72.729	CS MON 10IN DN @ NW COR ALONDRA BLVD & BELLFLOWER BLVD 33FT N & 73FT W C/L INT MKD (BM 6-7 1951)	CY 7028

QUAD-YEAR	ELEV	DESCRIPTION (INCLUDE QUAD AND YEAR IN DESCRIPTION)	BM NUMBER
BASELINE (1975)	69.057	CS MCN FL @ SE COR ALONDRA BLVD & LAKEWOOD BLVD 42FT S & 187FT E C/L INT MKD (BM 6-9A 1958)	CY 7029
BASELINE (1975)	77.869	CS MCN FL IN C B @ NW COR PARAMOUNT BLVD & CEN- TURY BLVD 90FT N & 39FT W C/L INT MKD (BM 7-2A 1961)	CY 7030
BASELINE (1975)	80.548	CS MCN FL IN C B ON NW COR PARAMOUNT BLVD & HARDING AVE 40FT N & 41FT W C/L INT MKD (BM 7-3A 1961)	CY 7031
BASELINE (1975)	79.846	CS MCN 10IN DN ON NW COR HARDING AVE & PARAMOUNT BLVD 95FT N & 44FT W C/L INT MKD (BELL E 11A 1960)	CY 7032
BASELINE (1975)	105.609	CS REF MON IN WELL 40FT W/O C/L PARAMOUNT BLVD & 42FT S C/L PROD ALAMEDA ST MKD (BELL G 9 RM-1)	CY 7033
BASELINE (1975)	105.640	CS REF MON IN WELL 40FT W/O C/L PARAMOUNT BLVD & 38FT N/O C/L PROD ALAMEDA ST MKD (BELL G 9 RM2)	CY 7034
BASELINE (1975)	133.388	CS MCN 10IN DN SE COR GALLATIN RD & PARAMOUNT BLVD 59FT E & 25FT S C/L INT MKD (BM 7-12 1951)	CY 7036
NORWALK (1980)	109.443	L&T N CB LEFFINGWELL RD 12FT E BCR @ NE COR LEFFINGWELL RD & MEYER RD 40FT N & 50FT E C/L INT	CY 7270
NORWALK (1980)	112.107	L&BN W CB 2FT N CB @ NW COR LOMA DR & LEFFINGWELL RD 55FT N & 20FT W C/L INT	CY 7271
SANTA FE (1980)	153.292	L&BN E CB 38FT S BCR @ SE COR WASHINGTON BLVD & SORENSEN AVE 120FT S & 42FT E C/L INT MKD (BM)	CY 7446
BASELINE (1975)	159.123	L&BN W CB 4FT N BCR @ NW COR TELEGRAPH RD & GREENLEAF AVE 80FT N & 32FT W C/L INT MKD (BM)	CY 7449
BASELINE (1975)	67.906	L&BN S CB FIRESTONE BLVD (S FRONTAGE RD SANTA ANA FRWY) 20FT S C/L & 0.25MI W MARQUARDT AVE IN FRONT PP 1119957E MKD (BM) 21FT W/O WLY COR BLDG CALAVAR CORP	CY 7497
BASELINE (1975)	69.077	L&BN S CB FIRESTONE BLVD (S FRONTAGE RD SANTA ANA FRWY) 20FT S C/L IN FRONT BLDG 13700 0.25MI W MARQUARDT AVE MKD (BM)	CY 7498
BASELINE (1975)	80.012	L&BN S CB FIRESTONE BLVD (S FRONTAGE RD SANTA ANA FRWY) 20FT S C/L & 90FT W C/L CARMENITA RD OFFRAMP MKD (BM)	CY 7499

QUAD-YEAR	ELEV	DESCRIPTION (INCLUDE QUAD AND YEAR IN DESCRIPTION)	BM NUMBER
BASELINE (1975)	77.620	L&BN CONC HDWL 23FT S C/L FIRESTONE BLVD (S FRONTAGE RD SANTA ANA FRWY) IN FRONT BLDG 13146 0.3MI W CARMENITA RD MKD (BM) 40FT E LOADING DOCK	CY 7500
BASELINE (1975)	77.556	L&BN S CB FIRESTONE BLVD (S FRONTAGE RD SANTA ANA FRWY 20FT S C/L NR E P/L BLDG 13100 AUTOMATIC SPRINKLER CORP 0.3MI W CARMENITA RD MKD (BM)	CY 7501
BASELINE (1975)	78.738	L&BN CONC RET WALL ON SW COR SHOEMAKER AVE & SPRR @ COR 8FT CHAIN LINK FEN 35FT S & 44FT W C/L INT MKD (BM)	CY 7502
BASELINE (1975)	81.543	L&BN S HDWL CULV 23FT S C/L FIRESTONE BLVD (S FRONTAGE RD SANTA ANA FRWY) 0.4MI W SHOEMAKER AVE MKD (BM) OPP NE COR BLDG NO 12680	CY 7503
BASELINE (1975)	81.472	L&BN N HDWL CULV 22FT N C/L FIRESTONE BLVD (S FRONTAGE RD SANTA ANA FRWY) 0.3MI W SHOEMAKER AVE MKD (BM)	CY 7504
BASELINE (1975)	140.626	LACS MON IN SE COR C B 122FT N & 21FT W C/L INT TELEGRAPH RD & PASSONS BLVD MKD (BM 4-15A 1968)	CY 7747
BASELINE (1975)	235.482	RDBM TAG 33FT S BCR 110FT S & 40FT W C/L INT WHITTIER BLVD & PAINTER AVE	CY 7762
BASELINE (1975)	108.841	CS REF MON IN WELL 8IN DN @ SW COR PARAMOUNT BLVD & STEWART & GRAY RD 50FT S & 50FT W/O C/L INT 1FT BK OF WK MKD (RM 1-1960)	CY 7763
BASELINE (1975)	108.118	RDBM TAG 1FT S BCR @ SW COR PARAMOUNT BLVD & 1ST ALLEY S COLE ST 17FT S & 38FT W C/L INT	CY 7764
BASELINE (1975)	97.398	CS REF MON IN WELL 8IN DN @ SW COR PARAMOUNT BLVD & IMPERIAL HWY 46FT S & 55FT W C/L INT MKD(RM-4 BELL F 10A 1960)	CY 7766
BASELINE (1975)	72.948	RDBM TAG 8FT N BCR INTO CB RET @ SW COR PARAMOUNT BLVD & COMPTON BLVD 59FT S & 40FT W C/L INT	CY 7768
BASELINE (1975)	75.613	L & T 40FT S BCR @ SW COR PARAMOUNT BLVD & ROSECRANS AVE 120FT S & 35FT W C/L INT	CY 7815
BASELINE (1975)	241.734	CAL DIV OF HWYS MON 15FT W BCR 38FT N & 66FT W C/L INT WHITTIER BLVD & CALIFORNIA AVE	CY 8180
BASELINE (1975)	249.342	L & BN 2FT W BCR 37FT S & 70FT W C/L INT WHITTIER BLVD & CALMADA AVE MKD (BM)	CY 8182

QUAD-YEAR	ELEV	DESCRIPTION (INCLUDE QUAD AND YEAR IN DESCRIPTION)	BM NUMBER
BASELINE (1975)	250.741	L & BN 1FT E BCR 37FT S & 29FT E C/L INT WHITTIER BLVD & CALMADA AVE MKD (BM)	CY 8183
BASELINE (1975)	259.634	LACS MON FL IN ISLE 5FT S & 43FT E C/L INT WHITTIER BLVD & OCEAN VIEW AVE MKD BM 1-11B 1966	CY 8185
BASELINE (1975)	261.622	RDBM TAG 2FT S BCR 70FT S & 45FT E C/L INT COLIMA RD & WHITTIER BLVD	CY 8187
BASELINE (1975)	232.960	L&S 11FT W BCR 38FT N & 75FT W C/L INT WHITTIER BLVD & WASHINGTON AVE	CY 8192
BASELINE (1975)	221.100	RDBM TAG 2FT W BCR 38FT S & 51FT W C/L INT WHITTIER BLVD & COMSTOCK AVE	CY 8193
BASELINE (1975)	239.232	RDBM TAG 8FT W BCR 34FT S & 64FT E C/L INT WHITTIER BLVD & PAINTER AVE	CY 8194
SANTA FE (1980)	171.644	L&PK 45FT S/O BCR 113FT S/O C/L WASHINGTON BLVD & 32FT W/O C/L LAMBERT RD	CY 8199
SANTA FE (1980)	173.607	RDBM TAG 1FT E/O BCR 42FT S/O WASHINGTON BLVD & 50FT E/O C/L LAMBERT RD	CY 8200
SANTA FE (1980)	171.077	RDBM TAG 5FT W BCR @ NW COR LAMBERT RD & SANTA FE SPRINGS RD 30FT N & 111FT W C/L INT	CY 8203
SANTA FE (1980)	172.444	RDBM TAG 1FT W BCR @ SW COR LAMBERT RD & GREENLEAF AVE 32FT S & 68FT W C/L INT	CY 8204
SANTA FE (1980)	171.880	RDBM TAG 1FT W BCR INTO RET @ SE COR LAMBERT RD & GREENLEAF AVE 32FT S & 62FT E C/L INT	CY 8205
SANTA FE (1980)	197.756	2 IN IP FL ON C/L LAMBERT RD & 145FT E C/L BONAVISTA LN USE W EDGE PIPE TAG MKD (CITY OF WHITTIER LS 2810)	CY 8206
SANTA FE (1980)	197.242	RDBM TAG 1FT N BCR INTO RET @ SW COR LAMBERT RD & COLIMA RD 70FT S & 40FT W C/L INT	CY 8207
SANTA FE (1980)	204.834	RDBM 1FT E BCR @ SE COR LAMBERT RD & COLE RD 100FT E & 32FT S C/L INT	CY 8208
SANTA FE (1980)	217.615	RDBM TAG 5FT W BCR @ SW COR LAMBERT RD & JENKINS DR 60FT W & 32FT S C/L INT	CY 8209
SANTA FE (1980)	218.126	L & T 32FT S C/L LAMBERT RD & 55FT E C/L JENKINS DR	CY 8210
SANTA FE (1980)	241.679	RDBM TAG 1FT W BCR @ NW COR LAMBERT RD & SANTA GERTRUDES AVE 96FT W & 38FT N C/L INT	CY 8211

QUAD-YEAR	ELEV	DESCRIPTION (INCLUDE QUAD AND YEAR IN DESCRIPTION)	BM NUMBER
SANTA FE (1980)	241.737	RAM SET 1FT S BCR @ SW COR LAMBERT RD & SANTA GERTRUDES AVE 59FT S & 27FT W C/L INT	CY 8212
SANTA FE (1980)	156.972	RDBM TAG 5FT N/O BCR @ NE COR MILLS AVE & MULBERRY DR 90FT N & 28FT E/O C/L INT	CY 8218
SANTA FE (1980)	149.440	LAFC MON IN WELL 6IN DN @ C/L INT MILLS AVE & BROADWAY	CY 8219
SANTA FE (1980)	134.011	RD HD SPK CTR C.B. ON NW COR MILLS AVE & CLOSE ST 52FT N & 30FT W C/L INT PAINTED (BM)	CY 8220
BASELINE (1975)	150.281	L & T 1FT S BCR @ NWLY COR TELEGRAPH RD & MILLS AVE 45FT NLY & 34FT WLY C/L INT	CY 8222
BASELINE (1975)	137.705	L & T 1FT E BCR @ NE COR TELEGRAPH RD & VICTORIA AVE 40FT N & 46FT E C/L INT	CY 8224
BASELINE (1975)	195.038	CS BM MON FL ON SW COR TELEGRAPH RD & VALLEY VIEW AVE 42FT S & 38FT W C/L INT MKD (BM 4 - 6B)	CY 8225
BASELINE (1975)	215.913	CS MON IN WELL 12IN DN 1FT BK OF WK 50FT S & 64FT W/O C/L INT LEFFINGWELL RD & LA MIRADA BLVD MKD (K9 1960)	CY 8228
BASELINE (1975)	224.754	L & BN 13FT N BCR @ NW COR LEFFINGWELL RD & STAMEY RD 80FT N & 18FT W C/L INT	CY 8229
BASELINE (1975)	224.934	L & BRAD 42FT S C/L LEFFINGWELL RD & 40FT E C/L PROD STAMEY RD	CY 8230
BASELINE (1975)	253.913	CS BM MON FL CTR PKWY NR C/L LEFFINGWELL RD & 170FT E C/L LAMBERT RD MKD (BM 4 - 18 1965)	CY 8231
BASELINE (1975)	266.774	CS MON FL @ SE COR LEFFINGWELL RD & FIRST AVE 53FT S & 54FT E C/L INT MKD (3 - 16B 1965)	CY 8232
BASELINE (1975)	157.498	L & BN IN E CB 1FT S/O BCR @ SE COR VALLEY VIEW AVE & LEFFINGWELL RD 60FT S & 42FT E/O C/L INT	CY 8629
BASELINE (1975)	119.197	L & T IN CH SQ NR CTR CB RET @ NE COR VALLEY VIEW AVE & IMPERIAL HWY 50FT N & 51FT E/O C/L INT	CY 8631
BASELINE (1975)	102.991	RDBM TAG IN W CB 26FT S/O & 38FT W/O C/L INT @ VALLEY VIEW AVE & ADREE ST TO THE E	CY 8632
BASELINE (1975)	95.155	L & T IN W CB 2FT S/O BCR @ SW COR OF VALLEY VIEW AVE & FOSTER RD 40FT W & 57FT S/O C/L INT	CY 8633
BASELINE (1975)	113.331	L & BN IN E CB 1FT N/O BCR @ NE COR VALLEY VIEW AVE & ROSECRANS AVE 77FT N/O & 40FT E/O C/L INT	CY 8634

QUAD-YEAR	ELEV	DESCRIPTION (INCLUDE QUAD AND YEAR IN DESCRIPTION)	BM NUMBER
BASELINE (1975)	111.725	L & T NR CTR CB RET @ SW COR VALLEY VIEW AVE & ROSECRANS AVE 56FT S/O & 50FT W/O C/L INT	CY 8635
BASELINE (1975)	79.894	RDBM TAG IN E CB 6FT N/O BCR @ NE COR VALLEY VIEW AVE & GANNET ST 70FT N & 38FT E/O C/L INT	CY 8636
BASELINE (1975)	79.394	RDBM TAG IN N CB 2FT W/O BCR @ NW COR VALLEY VIEW AVE & GANNET ST 26FT N & 78FT W/O C/L INT	CY 8637
BASELINE (1975)	74.072	LACS MON FL IN CONC ABUT @ NE COR BR NO1262 OVER LA MIRADA CK 46FT E/O C/L VALLEY VIEW AVE MKD (BM 1-2A 1968)	CY 8638
BASELINE (1975)	73.847	L & BN IN CHIS SQ IN W CB 40FT W/O C/L VALLEY VIEW AVE 1.5FT N/O L & T @ C/L CHANNEL OF BR # 1262 OVER LA MIRADA CREEK	CY 8639
BASELINE (1975)	66.932	L & T IN N CB 2FT E/O BCR @ NE COR OF VALLEY VIEW AVE & ALCNDRA BLVD 40FT N & 76FT E/O C/L INT	CY 8640
BASELINE (1975)	57.420	RDBM TAG IN N CB 3FT W/O BCR @ NW COR VALLEY VIEW AVE & ARBOR PL 22FT N/O & 70FT W/O C/L INT	CY 8641A
BASELINE (1975)	57.731	RDBM TAG IN SO END C B IN E CB 8FT N & 42FT E/O C/L INT VALLEY VIEW AVE & PARK PL	CY 8642
BASELINE (1975)	56.743	RDBM TAG IN S CB 3FT W BCR @ SW COR 22FT S 79FT W C/L INT VALLEY VIEW AVE & PARK PL	CY 8643A
BASELINE (1975)	54.571	CSBM MON FL IN S END C B 4FT N/O BCR @ NW COR VALLEY VIEW AVE & ARTESIA BLVD 82FT N & 43FT W/O C/L INT MKD (BM 8-LA 1968)	CY 8644
BASELINE (1975)	54.359	RDBM TAG IN NO CB 2FT E/O BCR @ NE COR VALLEY VIEW AVE & ARTESIA BLVD 42FT N & 79FT E/O C/L INT	CY 8645
LAMIRADA (1980)	257.490	RDBM TAG IN W CB SER RD 2FT N BCR @ NW COR FIRST AVE & SHARONHILL DR 46FT N/O & 70FT W/O C/L INT	CY 8670
LAMIRADA (1980)	265.749	L & T @ BK WK 45FT N & 39FT E/O C/L INT SANTA GERTRUDES AVE & GAZEBROOK DR MKD (BM)	CY 8672
LAMIRADA (1980)	225.486	L & T E CB 40FT N/O N END C B 32FT E & 1500FT S C/L INT SANTA GERTRUDES AVE & FOSTER RD 260FT N/O AVENIDA SANTA TECLA MKD (BM)	CY 8673
LAMIRADA (1980)	181.022	RDBM TAG IN E CB 6FT N/O BCR @ NE COR SANTA GERTRUDES AVE & ROSECRANS AVE 112FT N & 30FT E/O C/L INT	CY 8674

QUAD-YEAR	ELEV	DESCRIPTION (INCLUDE QUAD AND YEAR IN DESCRIPTION)	BM NUMBER
LAMIRADA (1980)	178.422	RDBM TAG IN S CB 10FT W/O BCR @ SE COR SANTA GERTRUDES AVE & ROSECRANS AVE 61FT E & 40FT S/O C/L INT	CY 8675
LAMIRADA (1980)	163.369	RDBM TAG IN W CB 1FT N/O BCR @ NW COR SANTA GERTRUDES AVE & ASHGROVE DR 56FT N & 30FT W/O C/L INT	CY 8676
LAMIRADA (1980)	163.086	RDBM TAG IN S CB 3FT E/O BCR @ SE COR SANTA GERTRUDES AVE & ASHGROVE DR 70FT E/O & 18FT S/O C/L INT	CY 8677
NORWALK (1980)	113.186	RDBM TAG 2FT E BCR @ SE COR LEFFINGWELL RD & CARMENITA AVE 42FT S & 52FT E C/L INT	CY 8703
NORWALK (1980)	115.224	RDBM TAG 3FT E BCR @ NE COR LEFFINGWELL RD & CARMENITA AVE 42FT N & 120FT E C/L INT	CY 8704
NORWALK (1980)	111.684	L & BRAD 1FT W BCR @ NW COR LEFFINGWELL RD & LELAND AVE 42FT N & 30FT W C/L INT	CY 8705
NORWALK (1980)	112.688	RDBM TAG 6FT E BCR @ NE COR LEFFINGWELL RD & LELAND AVE 42FT N & 70FT E C/L INT	CY 8706
BASELINE (1975)	116.550	CS BM MON FL IN C B @ NW COR FIRESTONE BLVD & PARAMOUNT BLVD 125FT N & 41FT W C/L INT MKD (BM 7-8B 1970)	CY 8713
BASELINE (1975)	115.813	RDBM TAG 1FT E BCR @ NE COR FIRESTONE BLVD & PARAMOUNT BLVD 38FT N & 78FT E C/L INT	CY 8714
BASELINE (1975)	83.930	LACS MON IN WELL 10IN DN @ SE COR ROSECRANS AVE & WOODRUFF AVE 61FT S & 75FT E C/L INT MKD (BM 6-6 A 1970)	CY 8718
BASELINE (1975)	140.703	CS MON IN WELL 1FT BK OF CB 2FT S/O BCR @ SW COR NORWALK BLVD & TELEGRAPH RD 41FT W & 50FT S/O C/L INT MKD (BM 2-11B)	CY 8723
BASELINE (1975)	96.584	RDBM TAG 9FT E BCR @ NE COR SAN ANTONIO DR & FIRESTONE BLVD 40FT N & 85FT E C/L INT	CY 8727
BASELINE (1975)	96.217	DIV HWY TAG 9FT E BCR INTO RET @ SW COR SAN ANTONIO DR & FIRESTONE BL 40FT S & 68FT W C/L INT	CY 8728
NORWALK (1980)	164.801	RDBM TAG 40FT W C/L CARMENITA RD FRONT OF PP NO 1334051E GPP HSE #11320 700FT N MEYER RD	CY 8730
BASELINE (1975)	110.547	CSBM MON FL 1FT S CB @ SW COR ROSECRANS AVE & VALLEY VIEW AVE 41FT S & 170FT W C/L INT MKD (BM7-60 1970) 105FT W/O BCR	CY 8737

QUAD-YEAR	ELEV	DESCRIPTION (INCLUDE QUAD AND YEAR IN DESCRIPTION)	BM NUMBER
BASELINE (1975)	158.469	LACS MON IN WELL 8IN DN 1FT W CB FACE 2FT N BCR @ NW COR TELEGRAPH RD & GREENLEAF AVE 33FT W & 78FT N C/L INT MKD (4-10 C 1970)	CY 8740
BASELINE (1975)	98.745	COE MON FL IN SE COR BRIDGE OVER SAN GABRIEL RIVER 29FT S C/L ROSECRANS AVE MKD (SG 22 1959)	CY 8743
BASELINE (1975)	83.018	CS BM IN WELL 8IN DN @ NW COR ROSECRANS AVE & STUDEBAKER RD 58FT N & 90FT W C/L INT MKD (BM 6-2 A 1970)	CY 8744
BASELINE (1975)	94.231	L&T 1FT E BCR @ NELY COR SAN ANTONIO DR & PINE ST 18FT N & 78FT E C/L INT	CY 8745
BASELINE (1975)	77.633	LACS MON IN WELL 8IN DN @ NE COR CARMENITA RD & FIRESTONE BL 32FT N & 126FT E C/L INT MKD (BM 2-2 C 1970)	CY 8747
BASELINE (1975)	117.255	RAM SET 40FT E C/L PARAMOUNT BLVD & 3FT S C/L PROD 4TH PL	CY 8748
BASELINE (1975)	117.328	CS MON IN WELL 8IN DN 1FT BK OF CB @ NW COR PARAMOUNT BLVD & 5TH ST 52FT N & 41FT W/O C/L INT MKD (BM 7-9B 1970)	CY 8749
BASELINE (1975)	121.980	RDBM TAG 1FT S BCR @ SW COR PARAMOUNT BLVD & HARPER AVE 45FT S & 40FT W C/L INT	CY 8750
BASELINE (1975)	83.405	S & L IN S CB 0.5FT W/O BCR @ SW COR BLOOMFIELD AVE & ROSECRANS AVE 42FT S & 66FT W/O C/L INT	CY 8851
BASELINE (1975)	82.801	RDBM TAG IN N CB 2.5FT W/O BCR @ NE COR BLOOMFIELD AVE & FIRESTONE BLVD (ACCESS RD) 57FT ELY C/L BLOOMFIELD & 19FT NLY C/L FIRESTONE	CY 8852
BASELINE (1975)	295.358	L&BR CTR OF CB RET @ NE COR LA HABRA BLVD & VALLEY HOME AVE 35FT N & 33FT E/O C/L INT	CY 9191
BASELINE (1975)	278.674	L&T IN S CB LEFFINGWELL RD 35FT S & 50FT W/O C/L INT TIGRINA AVE 17FT W/O BCR & SW COR	CY 9192
BASELINE (1975)	240.388	SPK & L IN CONC CB 34FT W/O BCR @ NW COR SANTA GERTRUDES AVE & LEFFINGWELL RD 82FT W & 40FT N/O C/L INT MKD (S D 729)	CY 9193
BASELINE (1975)	234.212	LAFC MON @ BK OF C B 44FT S/O C/L LEFFINGWELL RD & 8FT E/O C/L PROD EL ARCO DRIVE	CY 9194
BASELINE (1975)	224.643	LACE TAG IN S CB LEFFINGWELL RD 42FT S & 41FT E/O C/L INT SCOTT RD	CY 9195

QUAD-YEAR	ELEV	DESCRIPTION (INCLUDE QUAD AND YEAR IN DESCRIPTION)	BM NUMBER
BASELINE (1975)	223.527	LACE TAG IN S CB LEFFINGWELL RD 42FT S & 53FT W/O C/L INT SCOTT RD	CY 9196
BASELINE (1975)	224.234	C S MON IN WELL 1FT N/O N CB OF LEFFINGWELL RD 1FT E/O BCR @ NE COR STAMY RD 57FT E & 43FT N/O C/L INT MKD (4-3B 1970)	CY 9197
BASELINE (1975)	187.744	CSBM MON FL 2FT BK OF CB 2FT E/O BCR @ NE COR LEFFINGWELL RD & TELEGRAPH RD 42FT N & 48FT E/O C/L INT MKD (BM 1-9D)	CY 9198
BASELINE (1975)	190.891	L&T IN MCR @ NW COR TELEGRAPH RD & LEFFINGWELL RD 58FT N & 58FT W/O C/L INT	CY 9199
BASELINE (1975)	133.849	L AFC MON 45FT N/O C/L TELEGRAPH RD @ W END OF BRIDGE OVER L AFC CHANNEL 0.1 MI W/O VICTORIA AVE MKD (BM 109-33915 1966)	CY 9200
BASELINE (1975)	158.240	C S BM MON IN WELL 1FT BK OF CB 41FT N/O C/L TELEGRAPH RD & 20FT E/O C/L PROD TELECRON AVE MKD (4-7C 1970)	CY 9201
BASELINE (1975)	158.342	L&BR S CB TELEGRAPH RD 42FT S/O C/L & 24FT W/O C/L PROD LAUREL AVE	CY 9202
BASELINE (1975)	158.220	RD BM TAG 1FT E/O BCR @ NE COR TELEGRAPH RD & PAINTER AVE 40FT N & 62FT E/O C/L INT	CY 9203
BASELINE (1975)	158.193	L&BN 1FT W/O BCR @ NW COR TELEGRAPH RD & PAINTER AVE 40FT N & 67FT W/O C/L INT	CY 9204
BASELINE (1975)	145.582	RD BM TAG IN N CB TELEGRAPH RD 42FT N & 26FT E/O C/L PROD SPRING ST OPP PP NO 1993730E	CY 9205
BASELINE (1975)	124.691	RD BM TAG IN CONC CB 40FT N & 0.2 MI E/O INT TELEGRAPH RD & PIONEER AVE 56FT W/O CTR SP RR BRIDGE NO 1201 (7FT W/O END CB)	CY 9207
BASELINE (1975)	132.914	L&T IN CTR CB RET @ NW COR TELEGRAPH RD & ORR & DAY RD 54FT N & 49FT W/O C/L INT	CY 9208
BASELINE (1975)	139.997	CS MON NEAR C/L TELEGRAPH RD 41FT W/O W ON-OFF RAMP 605 FWY 160FT E/O E END BRIDGE NO 53-213 OVER SAN GABRIEL RIVER MKD (A-6A 1941)	CY 9209
BASELINE (1975)	144.408	L AFC MON IN SIDEWK @ NW COR BRIDGE NO B 841 OVER SAN GABRIEL RIVER 27FT N/O C/L TELEGRAPH RD MKD (77-73 1952)	CY 9210
BASELINE (1975)	142.419	L & CITY ENGR TAG IN CTR OF CB RET @ SW COR TELEGRAPH RD & PARAMOUNT BLVD 50FT W & 51FT S/O C/L INT	CY 9211

QUAD-YEAR	ELEV	DESCRIPTION (INCLUDE QUAD AND YEAR IN DESCRIPTION)	BM NUMBER
BASELINE (1975)	145.069	RDBM TAG IN W CB VALLEY VIEW AVE 42FT W/O C/L & 9FT S/O C/L PROD CUL-DE-SAC OF CHERE DR 0.2 MI S/O LEFFINGWELL RD	CY 9274
BASELINE (1975)	65.084	L&T 17FT E/O BCR @ SE COR FIRESTONE AVE & MARQUARDT AVE 86FT E & 22FT S/O C/L INT	CY 9275
BASELINE (1975)	69.695	STATE DIVISION OF HWY'S TAG IN LEAD IN CTR OF CB RET @ NE COR ALONDRA BLVD & FIRESTONE BLVD 46FT E & 50FT N/O C/L INT	CY 9276
BASELINE (1975)	83.433	L&T 5FT N/O BCR @ SE COR BLOOMFIELD AVE & ROSECRANS AVE 43FT E & 67FT S/O C/L INT	CY 9277
BASELINE (1975)	92.605	RDBM TAG IN S CB FIRESTONE BLVD 42FT S/O C/L & 0.25MI E/O NORWALK BLVD FT OF BLDG NO 12440 OPPOSITE SADDLEBACK SQUARE SIGN	CY 9279
BASELINE (1975)	94.978	RAMSET & TAG 4FT W/O BCR @ NW COR FIRESTONE BLVD & NORWALK BLVD 38FT N & 39FT W/O C/L INT MKD (STATE OF CALIF DIVISION OF HWYS)	CY 9280
BASELINE (1975)	87.162	L&N IN ELY WALL OF C B 5FT W/O BCR @ NW COR ROSECRANS AVE & PICNEER BLVD 60FT W & 42FT N C/L INT	CY 9281
BASELINE (1975)	85.017	RDBM TAG 3FT W/O BCR @ NW COR ROSECRANS AVE (SERVICE RD) & FAIRFORD AVE 15FT N & 45FT W C/L INT	CY 9282
BASELINE (1975)	84.631	RAMSET CTR OF CB RET @ SW COR WOODRUFF AVE & ROSECRANS AVE 47FT S & 52FT W/O C/L INT	CY 9283
BASELINE (1975)	77.505	RDBM TAG IN W CB WOODRUFF AVE IN S WALL C B 21FT N/O BCR @ NW COR WOODRUFF AVE & WOODRUFF PL 40FT W & 57FT N/O C/L INT	CY 9284
BASELINE (1975)	68.276	CS MON IN WELL 1FT BK OF WK @ NE COR ALONDRA BLVD & CLARK AVE 55FT N & 52FT E/O C/L INT	CY 9285
BASELINE (1975)	69.639	LS TAG IN CB 11FT W/O BCR @ NW COR ALONDRA BLVD & VIRGINIA AVE 54FT W & 40FT N/O C/L INT (MKD LS 2428)	CY 9286
BASELINE (1975)	69.183	RAMSET CTR CB RET @ NE COR ALONDRA BLVD & LAKEWOOD BLVD 42FT N & 57FT E/O C/L INT	CY 9287
BASELINE (1975)	68.079	L&BR 2FT E/O BCR @ NW COR ALONDRA BLVD & PITTS AVE 42FT N & 39FT W/O C/L INT	CY 9288
BASELINE (1975)	66.223	CS MON IN WELL 1FT BK OF WK @ NE COR ALONDRA BLVD & DOWNEY AVE 51FT N & 59FT E/O C/L INT MKD (BM 6-10A)	CY 9289

QUAD-YEAR	ELEV	DESCRIPTION (INCLUDE QUAD AND YEAR IN DESCRIPTION)	BM NUMBER
BASELINE (1975)	68.953	L&BN 6FT N/O BCR @ NW COR ALONDRA BLVD & ORIZABA AVE 73FT N & 28FT W/O C/L INT	CY 9290
BASELINE (1975)	68.385	L&BR IN CTR OF CB RET @ NE COR ALONDRA BLVD & PARAMOUNT BLVD 54FT N & 51FT E/O C/L INT	CY 9291
BASELINE (1975)	68.134	CS MON FL IN S WALL C B @ NW COR PARAMOUNT BLVD & ALONDRA BLVD 42FT W & 120FT N/O C/L INT MKD (BM 6-11B 1975)	CY 9292
BASELINE (1975)	72.392	CS MON 1FT BK OF WK CTR OF CB RET @ SW COR PARAMOUNT BLVD & COMPTON BLVD 56FT W & 50FT S/O C/L INT MKD (BM 6-13A 1970)	CY 9293
BASELINE (1975)	109.576	L&T 1FT S/O BCR @ SE COR PARAMOUNT BLVD STEWART & GRAY RD 38FT E & 76FT S/O C/L INT	CY 9295
BASELINE (1975)	103.852	L&FC TAG IN CTR OF CB RET @ NW COR PARAMOUNT BLVD & QUILL DR 29FT N & 47FT W/O C/L INT	CY 9296
BASELINE (1975)	90.152	L&BD 1FT S/O BCR @ SE COR PARAMOUNT BLVD & ADOREE AVE 38FT E & 44FT S/O C/L INT	CY 9298
BASELINE (1975)	152.336	RDBM TAG IN W CB NORWALK BLVD 40FT W/O C/L & 0.45MI S/O INT LOS NIETOS RD @ NLY SIDE OF NLY DR TO BLDG NO 9703	CY 9444
BASELINE (1975)	152.134	RDBM TAG IN E CB NORWALK BLVD 40FT E/O C/L & 0.45MI S/O INT LOS NIETOS RD (S SIDE OF C B)	CY 9445
BASELINE (1975)	252.008	RAM SET @ NE COR NEAR CTR CB RET WHITTIER BLVD & SCOTT AVE 56FT N & 28FT E/O C/L INT	CY 9447
BASELINE (1975)	247.025	CS BM MON FL IN W WALL C B 13FT W/O BCR @ NW COR WHITTIER BLVD SERV RD & BEN HUR AVE 15FT N & 55FT W/O C/L INT MKD (1-11C 1965)	CY 9448
BASELINE (1975)	229.825	L&T S CB PKWY 1FT W/O BCR @ SE COR WHITTIER BLVD SERV RD & JACMAR AVE 38FT E & 15FT S/O C/L INT SERV RD	CY 9449
BASELINE (1975)	231.260	CS BM MON IN WELL 6FT N/O BCR 1FT BACK OF CB @ SE COR SORENSEN AVE & WHITTIER BLVD 23FT E & 63FT S/O C/L INT MKD (BM 1-15B 1970)	CY 9450
LAMIRADA (1980)	298.100	CS MON IN WELL 15FT S & 8FT W/O C/L INT IMPERIAL HWY & 1ST AVE MKD (BM 3-14-1951 329)	CY 9575
BASELINE (1975)	156.034	L&T 3FT E/O BCR @ NW COR 32FT N/O C/L LOS NIETOS RD & 93FT W/O C/L NORWALK BLVD	CY 9651

QUAD-YEAR	ELEV	DESCRIPTION (INCLUDE QUAD AND YEAR IN DESCRIPTION)	BM NUMBER
SANTA FE (1980)	177.329	L&T 2FT N/O BCR 40FT E/O C/L PAINTER AVE & 67FT N/O C/L LAMBERT RD	CY 9652
BASELINE (1975)	98.457	RDBM TAG 2FT E/O BCR @ NE COR IMPERIAL HWY & PARAMOUNT BLVD 67FT E & 40FT N/O C/L INT	CY 9658
NORWALK (1980)	167.175	L&T 2FT S/O BCR @ SE COR CARMENITA RD & LAKELAND RD 42FT E & 47FT S/O C/L INT	CY 9672
NORWALK (1980)	157.258	L&T 3FT N/O BCR @ NE COR CARMENITA RD & BEATY AVE 40FT E & 71FT N/O C/L INT	CY 9673
BASELINE (1975)	132.261	RDBM TAG 1FT E/O BCR @ SE COR TELEGRAPH RD & ORR & DAY RD 40FT S & 77FT E/O C/L INT	CY 9675
BASELINE (1975)	132.656	RDBM TAG 1FT W/O BCR @ SW COR TELEGRAPH RD & ORR & DAY RD 42FT S & 77FT W/O C/L INT	CY 9676
BASELINE (1975)	61.988	L&BR 3FT E/O BCR IN CONC CB 27FT S/O C/L FIRESTONE BLVD & 74FT E/O C/L VALLEY VIEW AVE (SOUTH SIDE OF SANTA ANA FRWY)	CY 10027
BASELINE (1975)	61.858	L&BR 8FT E/O BCR IN CONC CB 27FT N/O C/L FIRESTONE BLVD & 75FT E/O C/L VALLEY VIEW AVE (SOUTH SIDE OF SANTA ANA FRWY)	CY 10028
BASELINE (1975)	149.451	RDBM TAG IN CONC CB 2FT N/O BCR 1 TELEGRAPH RD & 32FT E/O C/L MILLS ABANDONED	CY 10054
BASELINE (1975)	245.062	RDBM TAG E WALL C B 15FT N/O C/L SERVICE RD N SIDE WHITTIER BLVD & 47FT W/O C/L MILLS AVE 6FT W/O BCR	CY 10055